



**Tamar Valley**  
Area of Outstanding Natural Beauty

**Tamar Valley Area of Outstanding Natural Beauty  
Management Plan 2019 - 2024**

**A vibrant, dynamic, living landscape**

*“I have never seen so many natural beauties  
in such a limited spot as I have seen here.”*

The artist, J.M.W. Turner, referring to the Tamar Valley



## Ministerial Forward

I am fortunate that England's Areas of Outstanding Natural Beauty are part of my Ministerial responsibilities. Whether it be rolling hills, sweeping coastline or a tranquil village, spending time in an AONB can stir the heart and lift the spirit.

This is a pivotal moment for all AONBs. The Government has set its ambition in the 25 Year Environment Plan which states clearly the importance of natural beauty as part of our green future, while AONBs retain the highest status of protection for landscape through national planning policy. Leaving the EU brings with it an opportunity to develop a better system for supporting our farmers and land managers, who play such a vital role as stewards of the landscape. And the Review of National Parks and Areas of Outstanding Natural Beauty led by Julian Glover - the first of its kind for generations - will make recommendations to make sure our designated landscapes can flourish in the years ahead.

In my visits to AONBs around the country, I have been struck by the passion of many people - farmers, volunteers, and hard-working staff - for the beautiful places they live and work. In this spirit I am delighted to welcome the publication of this Statutory Management Plan for the Tamar Valley AONB. It is significant that this plan will be delivered in partnership by those who value the Tamar Valley AONB. I would like to thank all those involved in the preparation of this document, and wish you the best of success in bringing it to fruition.

A handwritten signature in black ink that reads "Lord Gardiner".

Lord Gardiner  
Parliamentary Under Secretary of State for  
Rural Affairs and Biosecurity





## Our Thoughts...

### Neil Burden - Chairman of the Tamar Valley AONB Partnership

It is a privilege to once again write a few words of welcome to this our fifth Management Plan 2019-2024.

We, for a limited period, are but temporary custodians of this important landscape designation, the Tamar Valley Area of Outstanding Natural Beauty. In order to continue in our mission, as well as celebrate, enjoy and recognise the diversity of the three river valleys, we present our new five-year Plan.

We can only achieve a successful outcome by a very positive close working relationship with Defra and its Ministers, the five local authorities, those bodies with statutory responsibilities, the local supportive community representatives who together form the nucleus of the wider AONB Partnership.

I cannot hesitate in reminding everyone of the many remarkable transformations that these very special valleys have experienced over the last 8,000 years. It just requires a pause at some vantage point or a stroll off the main road to experience what and how our ancestors worked and changed the land – both above and below ground, marked today by the many remaining signs of human habitation: Neolithic hunters and gatherers, Celtic burials and Roman villas, Saxon farmsteads and field enclosures, Norman churches, deer parks of Medieval kings, chapels, narrow lanes and high hedges, broadleaf and conifer woodlands and a mining industry of international importance. This once booming mining industry extracting nearly every mineral known to man is now celebrated with the Cornwall and West Devon Mining Landscape World Heritage Site. Yet, this often-despoiled landscape has been won back by nature and its now very diverse ecology secretly hid away from initial gaze.

We will continue to promote sustainability and help the whole by supporting a living, working environment for the woodsman, farmer, market gardener, rural business and resident alike. At the same time, we want to make the Valley accessible and invigorating, but resolving never to lose this treasure, its variety, and its beauty, which the changing seasons give us.

In recent times we have been very encouraged by Government support, for example the maintenance of the core funding index linked for four years, announced by Rory Stewart MP former Minister of the Environment at Defra, and the recent instigation by the Secretary of State for Environment, Food and Rural Affairs, Michael Gove MP of the Glover review in how to give the AONBs and National Parks even greater status.

Locally, we also had great encouragement announced in October 2018 of initial National Lottery support for the Tamara Landscape Partnership project. Development funding of £180,000 was awarded by the National Lottery Heritage Fund to help the Tamar Valley AONB and its partners progress their plans to apply for a full National Lottery grant of £2.3 million at a later date. 11 key projects within the Landscape Partnership will complement the delivery of our five-year Management Plan.

The following pages detail how we as an AONB Partnership can continue working within this unique environment, cognisant of the challenges of our changing world.



Cllr Neil Burden - Chairman of the Tamar Valley AONB Partnership



# Contents

## Introductory Chapters

1.0	Introduction to the Tamar Valley Area of Outstanding Natural Beauty	6
2.0	Working in Partnership to deliver the Management Plan	13

## Strategic Chapters

### Theme 1 Place

3.0	Landscape Character	17
4.0	Historic Environment and Local Distinctiveness	21
5.0	Biodiversity and Geodiversity	25
6.0	Rivers and Estuaries	29
7.0	Environmental Quality and Climate Change	33

### Theme 2 People and Prosperity

8.0	Farming, Forestry and Land Management	38
9.0	Access, Recreation and Tourism	42
10.0	Planning and Development	46
11.0	Communities and Culture	51
12.0	Communications, Education and Awareness	55

### Theme 3 Partnership

13.0	The AONB Partnership	60
------	----------------------	----

	Supporting Documents	65
--	----------------------	----

	References	67
--	------------	----

	Glossary	69
--	----------	----



## 1.0 Introduction to the Tamar Valley Area of Outstanding Natural Beauty



## 1.1 The Tamar Valley – An outstandingly beautiful landscape

The Tamar Valley Area of Outstanding Natural Beauty (AONB) is a protected landscape of national importance and natural beauty. Those factors, which contribute to the Tamar Valley's outstanding status in a national context, relate to its completeness, cultural development and human scale.

This diverse landscape is defined and shaped by the rivers Tamar, Tavy and Lynher, and by the human activity focused around them. The river systems are a life force at the heart of the area and throughout the ages have dictated the patterns of settlement and communication. The River Tamar has for centuries marked the Celtic border between Cornwall and England, but the rivers have also been a uniting force, underpinning commerce, powering industry, transporting goods and providing food. This has shaped a distinctive local identity, built around hard manual labour, vibrant communities and strong religion.

The human imprint upon the area contributes to its sense of place. All around today's tranquil Valley is evidence of episodes of huge historical landscape change. Industrialisation, mining and market gardening form a unique parallel story within the rich rolling pastoral landscape. The legacies of this complex past are becoming intermingled and hidden within the extensive woodland, clothing the steep valley sides.

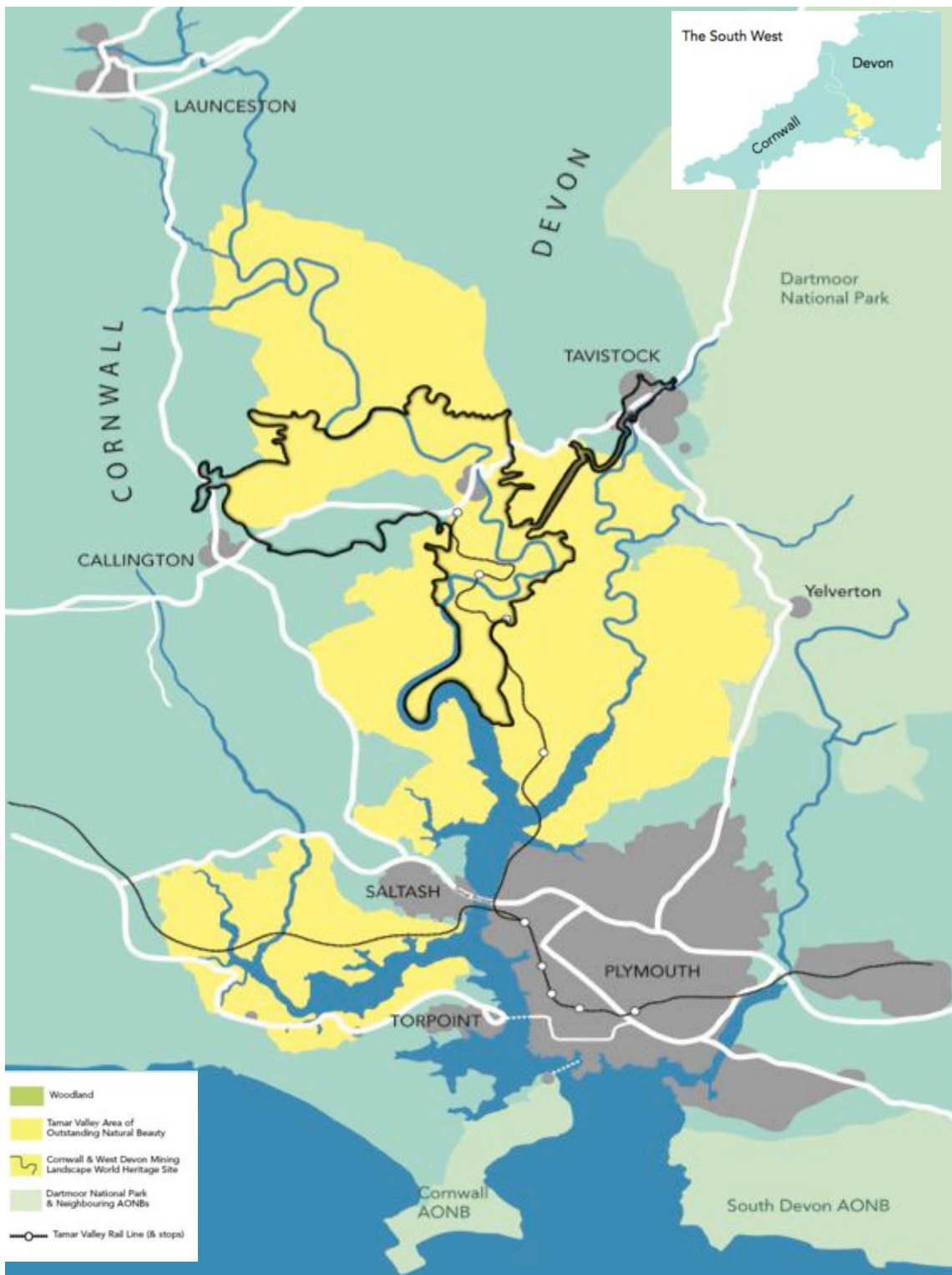
The Tamar Valley landscape has survived better than most, partly because of its steepness, difficult access and relative geographical isolation and as a consequence retains many small intricate features. Much of the medieval structure of the farmed countryside is still intact, with its small fields, high hedgebanks, deep narrow lanes, small farmsteads, great estates and remarkable 15<sup>th</sup> century stone bridges. The survival of this heritage is nationally important, but increasingly rare and currently more threatened than ever before.

Review of the Management Plan has coincided with a time of change in the midst of the uncertainties around Brexit. However, there are opportunities through the government's 25 Year Environment Plan<sup>1</sup> and the vision to ensure that protection and enhancement of the natural environment is a central priority with the aim to "be the first generation to leave the environment in a better state that we inherited it". The Landscapes review of the National Parks and AONBs<sup>2</sup> has also provided a platform for discussion around the future of protected landscapes. Responses from the Tamar Valley community have indicated engagement and debate with the review process and the feedback received has informed the Tamar Valley AONB's official response.

It is important to emphasise that although the Plan is split into sections, for ease of reference, these do not work in isolation. The interconnectedness and cross over of these themes is key to taking the vision of the Tamar Valley AONB forward and conserving, protecting and enhancing this very special place.

The challenge for the AONB Partnership is to recognise and protect the unique qualities that the past has endowed us with, but to find new and meaningful ways to sustain the landscape, protecting our heritage and supporting vibrant communities for the future.





## 1.2 Where is the Tamar Valley AONB?

The Tamar Valley AONB is located on the border of Cornwall and Devon, and includes the lower valleys of the Tamar, Tavy and Lynher. The larger section, around the rivers Tamar and Tavy, extends north from the broad estuary at Plymouth to the intricate, deeply incised river meanders just below Launceston and Tavistock. It borders Dartmoor National Park to the east and takes in Kit Hill to the west. The section around the River Lynher stretches west from Saltash and Torpoint to St Germans in south-east Cornwall.





### 1.3 Our 20-year Vision...

...guides the general direction of the Management Plan and remains unchanged from the 2014 - 2019 Plan.

“The people of the Tamar Valley are stewards of this rare valley and water landscape of high visual quality, a unique wildlife resource with a remarkable heritage, which is a legacy of thousands of years of human occupation. By supporting a thriving community with a sense of belonging and identity, we will ensure the sustainability of the area as a peaceful, tranquil breathing space; at a time of unprecedented change.”

## 1.4 Facts about the Tamar Valley AONB

When did the area become an AONB and how big is it?	The Tamar Valley AONB was designated in 1995 and covers 190 square kilometres (75 square miles) of rivers, estuaries and countryside. It is one of 38 AONBs in England and Wales.
Administrative areas	The boundary crosses 5 local authority areas, Cornwall Council, Devon County Council, West Devon Borough Council, South Hams District Council and Plymouth City Council. The AONB also partly borders Dartmoor National Park. The AONB incorporates 24 parishes.
Rivers	The AONB includes the lower reaches of three rivers and their tributaries: the Tamar, Tavy and Lynher.
Farmland	67% of the AONB is farmed.
Woodland	There are 3,668 hectares (22%) of woodland, significantly above the regional average.
Public rights of way	There are 127km of public rights of way.
Nature conservation	11% (1,688 hectares) of the AONB is nationally designated as a Site of Special Scientific Interest (SSSI), there are 7 SSSIs including 1 Special Protection Area (SPA). There are also 33 County Wildlife Sites (CWS) (13.3% of the AONB). Rivers are designated as the Plymouth Sound and Estuaries Special Area of Conservation (SAC), the Tamar Estuaries Complex Special Protection Area (SPA) and Tamar Estuary Marine Conservation Zone (MCZ).
Heritage designations	27 Scheduled Monuments 649 Listed Buildings 4 Registered Parks & Gardens 14 Conservation Areas 16.5% of the AONB is within the Cornwall and West Devon Mining Landscape World Heritage Site 3,961 entries on the Historic Environment Records of Devon and Cornwall
People	From the 2011 census data the population is 12,466 people mostly in the 30-50 age group. The next census is due in 2021.
Landscape	IUCN Category V protected landscape.

## 1.5 Special Qualities of the Tamar Valley AONB

### Why we are outstanding...

These are the aspects of natural beauty that justify the Tamar Valley's national importance and basis for designation as an AONB.

#### 1) A rare valley and water landscape

The Tamar Valley AONB represents a relatively unspoiled valley and water landscape. The lower tidal reaches of the estuary have dramatic contrasts between extensive low water mudflats and expansive waterscapes at high water. The middle valleys become dramatic with steep fringing woodlands, high cliffs and rocky outcrops juxtaposed with gently meandering stretches through lush pastureland. The higher areas of the AONB possess a more gently rolling pastoral floodplain. The river that was once a major industrial and trading route, busy with waterborne traffic and noise, is now a tranquil place, valued by visitors and locals alike for its peace and quiet, a silence only punctuated by bird calls.

#### 2) A landscape of high visual quality

The visual quality of the landscape in the Tamar Valley AONB at an intimate or panoramic scale is exceptional. The landscape contains huge contrasts and surprises. In many places the network of ancient deeply incised lanes, high hedge banks and small fields gives a very enclosed, intimate and sometimes even claustrophobic feeling. This contrasts strongly with expansive estuarine vistas of the river valley and green patchworks of fields and hedges seen from vantage points such as Kit Hill or Weir Quay.

#### 3) A unique wildlife resource

The AONB sustains a diversity of wildlife habitats. Wildlife in the estuary is internationally important, especially for wintering waders and wildfowl. Mudflats, salt marsh, reedbeds, wet grassland, fen and fringing oak woodland provide habitats to support them. The rivers support a range of species, including otters and many scarce and endangered fish, such as the Allis shad, salmonids and eels. Woodland includes large tracts of well-managed coniferous forest and equally large areas of broadleaved woodland, much of it ancient semi-natural, supporting important species, including the heath fritillary butterfly and the nightjar. Lowland heathland remains in places. Species-rich hedges are a particular feature, and traditional orchards contain increasingly rare Tamar Valley varieties of apples, cherries and other fruit.

#### 4) A remarkable heritage

The unspoilt pattern of settlement dating mostly from medieval and post-medieval enclosures, lanes, fields, woodland and hedgebanks is an outstanding landscape legacy. Extensive mining activity from the late 18th century throughout the Valley, exploited mineral reserves. The combination of workers' housing, Methodist chapels, chimneys, engine houses, inclines and associated infrastructure has created a distinctive mining landscape. Evidence of the river's importance can be seen across the landscape by a series of structures, leats, weirs, quays, fords, viaducts, limekilns and bridges. The Valley's unique market gardening industry supplied many crops, via railway and river, to London and elsewhere, and evidence of this activity is still visible in the landscape today.

#### 5) A landscape of artistic and public appeal

The area has long been a haunt for artists and travellers. Some notable writers and artists frequented the Tamar Valley, such as J.M.W. Turner, and were as fascinated by the industrial environment as by the picturesque landscapes. Today there remains an active community of artists and craftspeople in the Valley. The strong local identity is perhaps most rooted in the traditional land-based industries – farming, forestry, market gardening, mining and traditional salmon fishing. Local celebrations of the environment, such as strawberry and cherry fairs, daffodil and apple days, survive as important links and reminders. This sense of place remains one of the area's great strengths and one that needs careful stewardship.



## 1.6 Summary of our key themes

<p><b>Theme 1</b></p> <p><b>Place</b></p> <p>Conserve and enhance the natural beauty of the Tamar Valley AONB.</p>
<p><b>Landscape Character</b></p> <p>Conserve and enhance the landscape character of the AONB</p>
<p><b>Historic Environment and Local Distinctiveness</b></p> <p>Discover, raise awareness of, protect, conserve and enhance heritage within the AONB.</p>
<p><b>Biodiversity and Geodiversity</b></p> <p>Support the conservation and enhancement of biodiversity and geodiversity in the AONB.</p>
<p><b>Rivers and Estuaries</b></p> <p>Maintain high quality river systems and habitats and identify opportunities for sustainable development, recreation and tourism.</p>
<p><b>Environmental Quality and Climate Change</b></p> <p>Ensure effective conservation and management of the AONB's natural resources and respond to the challenges of climate change.</p>

<p><b>Theme 2</b></p> <p><b>People and Prosperity</b></p> <p>Encourage and support sustainable economic development, social engagement and recreational activity where this is compatible with the purposes of AONB designation.</p>
<p><b>Farming, Forestry and Land Management</b></p> <p>Support systems of landscape management that conserve and enhance the AONB.</p>
<p><b>Access, Recreation and Tourism</b></p> <p>Promote the development of integrated access, recreation and tourism that are compatible with the AONB designation.</p>
<p><b>Planning and Development</b></p> <p>Ensure that the AONB's purpose and objectives are fully recognised in local planning policy.</p>
<p><b>Communities and Culture</b></p> <p>Support communities to understand and appreciate their cultural identity and contribute to a sustainable future for communities in the AONB.</p>
<p><b>Communications, Education and Awareness</b></p> <p>Promote a greater understanding, appreciation and enjoyment of the AONB landscape and wider recognition of the designation and its purpose.</p>

<p><b>Theme 3</b></p> <p><b>Partnership</b></p> <p>Recognise and value the national, regional and local importance of the AONB.</p>
<p><b>The AONB Partnership</b></p> <p>Maintain an effective, responsive, relevant and respected AONB Partnership that will sustain and promote core purposes of the AONB.</p>

## 2.0 Working in Partnership to deliver the Management Plan

### 2.1 Why is the Management Plan important?

The five-yearly review of the AONB Management Plan is a statutory duty of the Countryside and Rights of Way (CRoW) Act 2000<sup>3</sup>. It is also essential to review progress and to adjust the needs of the AONB in line with the most pressing current needs.

Natural England has established three key aims for all AONBs:

1. The primary purpose of AONB designation is to conserve and enhance natural beauty.
2. In pursuing the primary purpose, account should be taken of the needs of agriculture, forestry, other rural industries and of the economic and social needs of local communities. Particular regard should be paid to promoting sustainable forms of social and economic development that in themselves conserve and enhance the environment.
3. Recreation is not an objective of designation, but the demand for recreation should be met so far as this is consistent with the conservation of natural beauty and the needs of agriculture, forestry and other uses<sup>4</sup>.

Management Plans are adopted statutory policy of the Local Authorities. The purpose of the AONB Management Plan is to guide and inform authorities in the application of their duty to have regard to the purposes of the AONB, to encourage coordination and liaison between all stakeholders concerning their activities within the AONB and its wider setting, and to deliver the purposes of the AONB.

The Tamar Valley AONB is a member of the National Association for AONBs (NAAONB)<sup>5</sup>, which is a registered charity. The NAAONB has a mission to support and develop a network of ambitious AONB partnerships with a strong collective voice. Four objectives have been agreed that are common to all 46 AONBs across the UK. The Management Plan is the strategic expression of these at a local level and within the context of the special qualities of the Tamar Valley.

The Management Plan is supported by Annex documents relating to Landscape Character Areas, Special Qualities, Special Features and Planning which provide greater background detail in the two-year Delivery Plan arising from the objectives, policies and priorities outlined in the Management Plan. The rolling two-year Delivery Plan will be reviewed annually and updates provided on the Tamar Valley AONB website [www.tamarvalley.org.uk](http://www.tamarvalley.org.uk). The Management Plan will be monitored and evaluated against the targets stated in the Delivery Plan and progress outlined in the Annual Review, also available online.

#### Statutory duty in relation to AONBs

Section 85 of the Countryside and Rights of Way (CRoW) Act 2000 states that “in exercising or performing any functions in relation to, or so as to affect, land in these areas, relevant authorities “shall have regard” to their purposes”.

#### AONB Common Objectives

Conserve and enhance the natural and cultural heritage of AONBs ensuring they can meet the challenges of the future.
Support the economic and social wellbeing of local communities in ways which contribute to the conservation and enhancement of natural beauty.
Value, sustain and promote the benefits that AONBs provide society, including clean air and water, food, carbon storage and other services vital to the nation’s health and wellbeing.
Promote public understanding and enjoyment of the nature and culture of AONBs and encourage people to take action for their conservation.

## 2.2 Tamar Valley AONB Partnership

The Tamar Valley AONB Partnership was established in August 2000 and the first Tamar Valley AONB Management Plan was published at the same time. The Countryside and Rights of Way (CRoW) Act 2000 requires local authorities, with parts of the Tamar Valley AONB within their administrative area, to jointly review and publish a revised AONB Management Plan at least once every five years. The constituent local authorities forming a basis for this Plan are Cornwall Council, Devon County Council, West Devon Borough Council, South Hams District Council and Plymouth City Council. However, the Plan is developed, informed, consulted and monitored through a wider Partnership, representative of the interests and concerns across the designated area.

### Composition of the Tamar Valley AONB Partnership

The Management Plan sets out how natural beauty of the Tamar Valley AONB landscape will be conserved and enhanced. It is therefore of key relevance to local communities, parishes, residents, business landowners and farmers, government agencies, amenity groups and charities operating within, or with an interest in, the area. The Partnership includes representatives from these organisations throughout the AONB who all provide a breadth of expertise and local insight into relevant issues affecting the AONB purposes. The Partnership meets three times a year and also hosts an Annual Forum for the wider community.

The funding Local Authorities and a couple of additional Partnership members form the Executive Committee, that has responsibility for the AONB budgets, staffing and meeting Defra obligations. This committee meets four times a year.

### Funded by



### AONB Partnership





## 2.3 Partnership organisations, partnerships and plans influencing the Tamar Valley AONB

### Local Authorities

#### Cornwall Council

- Local Plan
- Waste Plan
- Transport Plan
- Minerals Plan
- Environmental Growth Strategy

#### Devon County Council

- Waste Plan
- Transport Plan
- Minerals Plan

#### Plymouth City Council

- Draft Joint Local Plan with WDBC and SHDC
- Waste Plan
- Transport Plan
- Minerals Plan

#### West Devon Borough Council

- Draft Joint Local Plan with PCC and SHDC

#### South Hams District Council

- Draft Joint Local Plan with PCC and WDBC
- New Corporate Strategy

#### Dartmoor National Park

- Local Plan
- Management Plan

### Defra family and Public Bodies

#### Environment Agency

Corporate Plan

- Protect the environment, water, land, air
- Improve

#### Forestry Commission

Government Forestry & Woodlands Policy

- Protect the nation's woods and forests
- Improve
- Expand

#### Natural England

Statutory Purpose

- Conserve
- Protect
- Improve
- Manage the natural environment
- Enhance

#### Tamar Valley AONB

Management Plan

- Conserve
- Enhance
- Protect the designated landscape
- Co-ordinate policy and action
- Guide and inform relevant authorities in applying the duty to 'have regard' to the purposes of the AONB

#### Historic England

National Heritage Protection Plan

- Conserve
- Enhance
- Sustain
- Protect the historic environment
- Promote

#### Defra

25 Year Environment Plan

- Conserve
- Enhance
- Improve
- Promote
- Protect the natural environment
- Manage

South West Marine Plan

Marine plan for South West inshore/offshore including tidal sections. Currently in development.

### Partnerships and other groups

#### Local Nature Partnerships

Devon and Cornwall Plans/Prospectus that set priorities and targets for sustaining the natural environment and biodiversity. Cornwall's Environmental Growth Strategy

#### Local Enterprise Partnerships

Cornwall and Heart of SW LEPs and Greater Dartmoor LEAF. Strategic plans for economic growth and job creation

#### Catchment Partnership

The Tamar Plan provides an integrated approach to protect and enhance the Tamar Catchment

#### Tamar Estuaries Consultative Forum

A Management Plan that provides a strategic framework for a sustainable estuary and coast

#### Cornwall & West Devon Mining Landscape World Heritage Site

Management Plan that sets the aims and objectives for the World Heritage Site

#### Neighbourhood Plans

Creating a strategy for local communities

Theme 1

Place





## 3.0 Landscape Character

### 3.1 Background

#### Landscape & Historic Landscape Character Assessment

Landscape has been described as a meeting ground between people and nature, past and present, and tangible and intangible values. By understanding and analysing what contributes to the melting pot of features that give us a 'sense of place', we can monitor landscape change and identify those processes that are strengthening and embedding what we value most about our landscape. It can also raise our awareness of what is weakening and destroying the cherished features and feel of the landscape, and enable us to put policies and actions in place to reduce negative impacts on the Tamar Valley landscape.

The Countryside Commission carried out the original landscape character assessment for the Tamar Valley in 1992, prior to its designation. Subsequent reviews have continued to build on this and underline the area's sense of place.

Historic Character Areas<sup>6</sup> have been defined throughout the Tamar Valley and Historic Landscape Analysis undertaken within Calstock Parish and the Lynher Valley (Cornwall Council Historic Environment section, 2012)<sup>7</sup>. These studies enable objective identification of the historic environment qualities of the Tamar Valley landscape, which is valuable to decision-makers. More recently, in 2018, a review was made of landscape character types on the Devon side of the Tamar as part of the joint Local Plan for West Devon Borough, South Hams District and Plymouth City Councils<sup>8</sup>.

Landscape Character Assessments and Historic Landscape Character Assessments are now extensively used in planning and land management to understand and describe the landscape, conserve and enhance its special qualities and key characters and to guide change.

The AONB Partnership has established a monitoring programme to provide indicators of change for important aspects of the special qualities and landscape character of the AONB and its setting, and in relation to forces for change. This process provides baseline data for comparison over time. A five-year reassessment of the monitoring report was undertaken in 2018<sup>9</sup>.

There is a growing base of research and discussion around tranquillity in protected landscapes in terms of visual and audible encroachment. Increased levels of light pollution are a growing concern both within the AONB and its setting, and increased levels of road noise can impact on our cherished landscape.

On a landscape scale visual beauty is crucial and there are many iconic viewpoints in the AONB such as the 360° views from the summit of Kit Hill and the riverside at Calstock. On a more local scale within the Tamar Valley AONB there may be locally valued landscapes. These are sites that were orchards, horticultural fields, small family farms, smallholdings, historic allotments, burgage plots or other socially and culturally significant places which the public either value as open space or as heritage resource even if they are not completely aware of the historic nature of these sites. It is important that these elements are reflected in any planning decisions that effect them and/or their setting, and that they are protected and enhanced or suitably robust mitigation strategies are put in place in order for development to meet the objectives of the AONB Management Plan.



## 3.2 Facts and Figures

### National Character Areas (NCAs)

These are areas that share similar landscape characteristics and follow natural lines in the landscape, rather than administrative boundaries, making them a good decision-making framework for the natural environment.

The **Tamar Valley** landscape links the two National Character Areas

**Cornish Killas** (NCA152)  
and **South Devon** (NCA151)

#### **Cornish Killas** (NCA152)

forms the main body of the Cornish landmass around granite outcrops, such as Bodmin Moor

#### **South Devon** (NCA151)

predominantly a plateau, dissected by steep valleys and rivers, most rising on the adjoining Dartmoor NCA

## 3.3 Forces for change

- 3.3.1 Outcomes of the Glover Review of National Parks and AONBs.
- 3.3.2 Planning requests for large scale renewables including solar farms, etc, less of an issue. However, cumulative impact of domestic scale changes on landscape, eg home alterations and domestic scale renewables has become more prevalent during the last five years.
- 3.3.3 Plastics are now high on the agenda and there has been an increase in the use of agricultural plastics and artificial mulches in recent years.
- 3.3.4 Pressure for development and lack of regard/understanding around vernacular architecture and landscape setting. Other details such as ancient field patterns are vulnerable to loss as are small features such as granite gateposts/stiles. Hedges and hedgebanks being lost through neglect or inappropriate management.
- 3.3.5 Continued development in the countryside and large-scale development on the fringes are likely to diminish levels of tranquillity. Threats include increased light pollution from urban sources and high intensity lighting within the Valley, increasing demand for waterborne/airborne recreation (drones) as well as general increase in noise levels.
- 3.3.6 Impact of climate change and sea level change will provide wetland restoration opportunities and some change in landscape character.
- 3.3.7 Ash dieback and other plant diseases and the implementation of the Plant Biosecurity Strategy 2014<sup>10</sup> will have large-scale effect on the wooded and hedged landscape over the coming years.
- 3.3.8 There is a drive to reverse the general decline in biodiversity and to manage the impacts of increasingly significant weather extremes.

### 3.4 Objective

3.4.1 Conserve and enhance the landscape character and local distinctiveness of the AONB.

### 3.5 Policies

- 3.5.1 Support sustainable development that respects, maintains and enhances the distinctive characteristics, special qualities, valued features and important heritage of the AONB.
- 3.5.2 Ensure Landscape Character Assessments and other evidence that support AONB policies are fit for purpose, up to date and consistent across the AONB.
- 3.5.3 Identify and promote opportunities to strengthen landscape and seascape character of the area.
- 3.5.4 Maintain, and where possible increase, levels of tranquillity throughout the AONB to ensure this special quality is sustained.
- 3.5.5 Support the Institution of Lighting Professionals' (ILP)<sup>11</sup> light pollution zones approach and standards to reduce and minimise the impact of light pollution.
- 3.5.6 Ensure development reflects local distinctiveness in terms of design, layout and landscaping based on evidenced review of its landscape/townscape/seascape context.

### 3.6 Priorities for action

- 3.6.1 Maintain, review and update baseline evidence; review and develop best practice in applying this information effectively to enhance and conserve the AONB.
- 3.6.2 Reinstate and enhance landscape features identified as missing, fragmented or at risk, and identify opportunities that are in keeping with the landscape character of the AONB.
- 3.6.3 Respond appropriately to planning applications, seeking solutions to visually intrusive and noisy developments and activities that impact adversely on tranquillity and dark skies.
- 3.6.4 Review the Landscape Character Assessment for the whole of the AONB to provide consistent approach across administrative boundaries.
- 3.6.5 Encourage a consistent cross-boundary approach to protecting areas of tranquillity.

# Landscape Character

## Case Study

### Ash Dieback in the Tamar Valley AONB



The loss of ash trees across the Tamar Valley AONB and beyond will have a profound effect on the landscape character of the area. In woodlands the consensus is that over 90% of ashes will be either dead or severely affected within 5-15 years. Outside woodlands, it is anticipated that around 50% of ashes will be severely affected within 5-15 years. Loss and damage of non-woodland trees will have a greater impact on landscape and biodiversity than those in woodlands.

The AONB team has hosted a number of events to highlight the plight of ash and to celebrate the tree both in the landscape and its cultural history.

The Heritage Lottery funded Helping Hands for Heritage project carried out an Ash Tree survey as one of its approved purposes. The original aim was simply to record and photograph healthy ash trees in the Tamar Valley AONB landscape to gain knowledge of ash dieback and respond to any threat from the disease. The project went beyond this and involved experts from the Earth Trust and Sylva Foundation through their involvement in the Living Ash and citizen science #AshTag projects.

24 volunteers were trained to carry out the Ash Tree surveys across the AONB, with workshop sessions at Antony House and at a location near Tiverton, the closest location to have ash dieback at the time. The latter provided an opportunity for participants to experience the disease up close. The main focus of the Antony session was 'tagging' trees on the estate and recording them to enter on the #AshTag website.

Rob Penn, author of 'The Man Who Made Things Out of Trees', spoke to a full house at the Tamar Valley Centre about his book focusing on the cultural uses for ash in the UK and beyond.

The AONB continues to have input into the ash dieback debate and is a partner on the Devon Ash Dieback Resilience Forum. Established in July 2016, the forum is looking at a number of issues including:

- The management of diseased trees in high risk situations
- Reducing barriers to action
- Landscape and ecological resilience
- Communication and awareness.



## 4.0 Historic Environment and Local Distinctiveness

### 4.1 Background

The Tamar Valley has a strong and remarkable heritage, which is intrinsically connected to its special landscape qualities. Many of the Valley's buildings have grown from the very landscape in which they are placed; their materials sourced from local quarries and woodlands, lime mortar burnt at a nearby quay, bricks made in village brickworks, or slate brought in from Mill Hill near Tavistock. The removal of these materials from the landscape has itself created character, for example resulting in wildlife-rich habitats in abandoned quarries.

Much of the diverse and important buried and built heritage of the AONB is recognised through statutory and non-statutory designations. Many of the area's Scheduled Monuments relate to mining heritage but the range of Scheduled Monuments also highlights the depth of history in the landscape from prehistory through to World War II.

Field boundaries reflect the changing use of the landscape, from medieval strip based fields around Latchley to late enclosures from the time of the Industrial Revolution to the north of St Ann's Chapel. The development of settlements indicate changes in employment and the economic and social success of communities. Field patterns representing the legacy of miners' smallholdings are of particular importance and have recently been identified as a key and threatened part of the cultural landscape in the Tamar Valley.

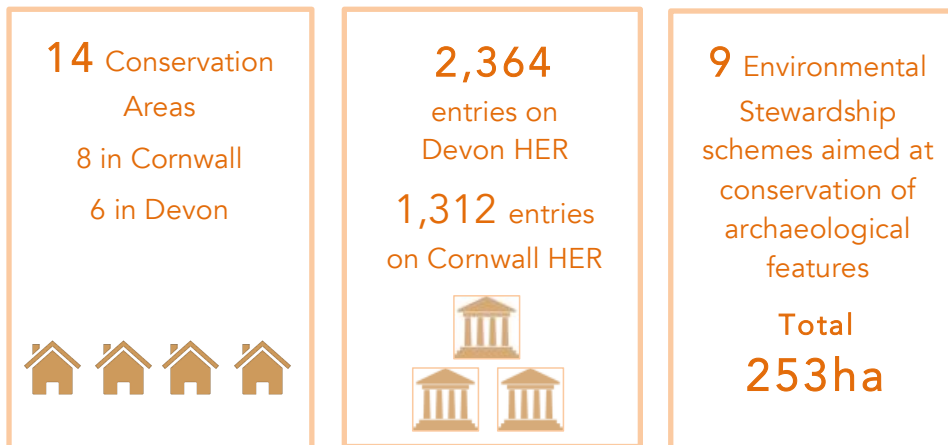
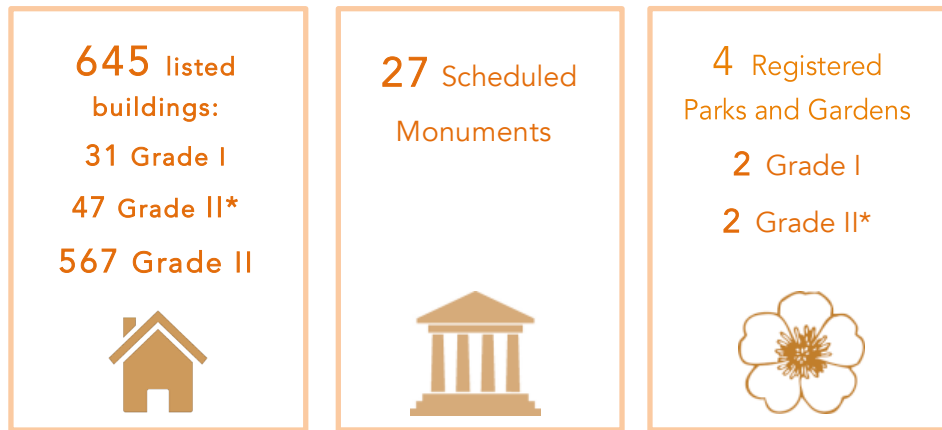
The mining heritage of the Valley is one of its key qualities reflected in its inscription as part of the Cornwall and West Devon Mining Landscape World Heritage Site (WHS) in 2006 (Area A10<sup>12</sup> Tamar Valley Mining District with Tavistock). By working in partnership with the WHS, we are promoting the sustainable management and conservation of this industrial heritage, and managing the potential pressures upon the AONB through the WHS. The WHS inscription further strengthens the importance of the heritage in the AONB by recognising international significance.

The non-designated elements of the landscape are often the most locally cherished and represent the cultural, social and economic history of a particular locality. However, these are perhaps the assets most at threat as they are often offered no protection or are disregarded - but without them the character of the AONB and our understanding of landscape development would be entirely different.

There are other heritage features in the Tamar Valley landscape, which contribute strongly to sense of place. Heralds of Spring has started to record the Valley's unique historic daffodil collection in a landscape context and there are opportunities to expand this work further along with other forgotten legacies of the market gardening era, including fruiting hedgerow trees and heritage crops.

The Historic Environment Strategy for Cornwall<sup>13</sup> is nearing completion and there has been a body of work within this around local distinctiveness with opportunities to take this work further on a local scale. There is also promise of new discoveries in the Tamar Valley. The AONB is a partner in the University of Exeter's Understanding Landscapes Project that will be carrying out archaeological investigations with focus areas on the Bere Peninsula, Calstock Roman Fort and Cotehele.

## 4.2 Facts and Figures



Tamar Valley (Area A10) is one of ten landscape areas inscribed in Cornwall and West Devon Mining Landscape World Heritage Site



## 4.3 Forces for change

- 4.3.1 Climate change pressure from flooding on historic environment, increased precipitation and storms/high winds potentially damaging vulnerable structures.
- 4.3.2 Lack of funding to maintain historic structures. Decline of agri-environment schemes and impact on land positively managed for archaeological conservation. Loss of features due to agricultural intensification, deep ploughing and erosion.
- 4.3.3 Globalisation, standardisation and erosion of local distinctiveness. There is a need to identify locally distinctive and vernacular features. Loss of connection with vernacular architecture and undervaluing assets.
- 4.3.4 Inappropriate redevelopment/reuse of historic structures/lack of imaginative reuse. Cumulative impact of incremental changes altering historic character. For example, domestic photo-voltaic and green energy installations and impact on town/villagescapes and the wider landscape. Lack of statutory protection of features on Historic Environment Record (HER).
- 4.3.5 New work around Heritage Capital to bring in line with Natural Capital.
- 4.3.6 Issues around vandalism and security of sites, many of which are in remote locations.

## 4.4 Objective

- 4.4.1 Improve co-ordination and influence in the management and protection of the distinctive landscape and historic environment features of the AONB to conserve, protect and raise awareness.

## 4.5 Policies

- 4.5.1 Actively protect and enhance all aspects of the historic environment and its setting, especially in collaboration with local planning authorities, Historic England, the World Heritage Site and other heritage organisations.
- 4.5.2 Development proposals that require extensive re-engineering that harms the historic landscape character or buildings, structures and/or boundary treatments that are visually intrusive will not be supported.
- 4.5.3 Further develop the body of knowledge across the full breadth of the heritage within the AONB, from prehistory to the present day, to improve and extend the understanding of local distinctiveness.

## 4.6 Priorities for action

- 4.6.1 Promote the development of Vernacular Design Guides for the AONB.
- 4.6.2 Work with partners to ensure that the historic environment is considered in development proposals and land management initiatives, particularly on unrecorded and undesignated sites.
- 4.6.3 Review the designed landscapes (designated and undesignated) and their contribution to the character and heritage of the AONB landscape. Identify opportunities and priorities for action.
- 4.6.4 Promote traditional skills in the management of the built heritage and natural environment to sustain the local distinctiveness of the Tamar Valley AONB.
- 4.6.5 Support projects that increase awareness and understanding of undesignated local heritage, and encourage inclusion in the Historic Environment Record.
- 4.6.6 Work with Historic England, landowners and funding bodies to target the protection of assets on the Heritage at Risk register.
- 4.6.7 Ensure a legacy for past heritage projects, including mining heritage and market gardening, and continue collaboration between the AONB and WHS partnerships and teams to achieve the purposes of these areas.
- 4.6.8 Support work to maintain mine infrastructure and provide access to sites providing links to learning and the health and wellbeing agenda.



# Historic Environment and Local Distinctiveness

## Case Study

### Helping Hands for Heritage



Flint arrow found during fieldwalking session  
Photo © Tamar Valley AONB

Helping Hands for Heritage was awarded £93,700 by the Heritage Lottery Fund as part of the Our Heritage programme in 2014. The aim of the two-year project was to increase and develop opportunities for volunteering across the Tamar Valley AONB. Expert training and engagement opportunities were offered to volunteers so that they could be the eyes and ears on the ground to help inform management of the Tamar Valley landscape.

The project encompassed heritage themes, both across biodiversity and cultural heritage, especially related to the special qualities that make up the AONB designation. A number of these themes focused on the historic environment and what makes the area locally distinctive.

- Researching and recording village vernacular
- Creation of a Monument Watch volunteer group for the Tamar Valley
- Conservation and management of archaeological sites
- Historic Weirs and 'Watery Heritage'
- Formation of 'Heritage Guides' and the Celebrating Shamrock event
- Recording market gardening heritage
- Historic Quays survey
- Trees of Special Interest challenge
- Orchard pruning and management skills
- Celebrating the 20<sup>th</sup> anniversary of the designation of the AONB

One of the key outcomes of the project was to provide volunteers with opportunities to train, research, record and monitor heritage across the Tamar Valley AONB. These outcomes would ultimately contribute to conserving and enhancing this protected landscape by identifying potential threats to the Tamar Valley's heritage, that so these issues can be sustainably addressed in the future. Many of the volunteers involved in the project continue to support the AONB as 'Valley Volunteers'.

*'Before Heritage Watch I was passing a ruinous pile of granite blocks, now I'm appreciating a source of employment for many hundreds of people producing copper for export to all parts of the world' - Volunteer*



## 5.0 Biodiversity and Geodiversity

### 5.1 Background

The tidal parts of the River Tamar, Tavy and Lynher are internationally important for wildlife and are discussed in more detail in Section 6.0.

There are 3,668ha of woodland in the AONB, with 22% of the designated area under woodland cover; this makes it one of the most wooded protected landscapes in the South West (by percentage cover). 376ha are ancient semi-natural woodland and 1,249.8ha are ancient replanted woodland. These sites are likely to have the greatest current or potential biodiversity interest. Broadleaved woods are invaluable habitats, although a significant proportion are undermanaged. The threat of tree diseases is an increasing challenge but will present opportunities to shape the landscape for future generations.

The Tamar Valley is a stronghold for a number of key species and the AONB is working in partnership with Butterfly Conservation<sup>14</sup> to safeguard the population of nationally rare Heath Fritillary butterflies in the Valley. The AONB is also a partner in the Devon Greater Horseshoe Bat Project<sup>15</sup> hosted by Devon Wildlife Trust, which also covers parts of Cornwall. This project focuses on the Greater Horseshoe Bat, which has an important maternity roost at the heart of the AONB, and providing habitat to support this rare species. The Building Resilience in South West Woodlands<sup>16</sup> project hosted by Plantlife will provide an opportunity to focus on the importance of Atlantic Woodlands including those in the Tamar Valley. A renewed interest in market gardening also offers exciting opportunities for 'nature friendly' approaches to growing in the Valley and the potential to work with partners to make this happen.

Several of the cultural landscape attributes of the WHS area are also important natural capital assets. Miners' smallholdings and the hedgerows that surround them provide habitats that support wildlife, former mine shafts and buildings provide shelter for bats and birds and metalliferous mine spoil heaps also host incredibly rare metallophyte plant species.

There are other landscape-scale projects that will provide significant benefits during the next five years. Securing funding for the development stage of the National Lottery Heritage Fund supported Tamara Landscape Partnership provides great scope for partners to work together to make a huge difference across the AONB and the surrounding areas in a post-Brexit era. The emphasis will be on a bigger, better and more joined-up approach to delivering habitat, heritage and landscape enhancements, where working in partnership with a range of organisations, landowners and communities can help to secure positive outcomes for biodiversity in the Tamar Valley. The long-term legacy will play a vital role in realising a robust, diverse and wildlife-rich landscape for years to come.

By working together with partners to deliver the outcomes of Defra's 25 Year Environment Plan, Defra's Tree Health Resilience Strategy<sup>17</sup> and more locally, Cornwall's Environmental Growth Strategy<sup>18</sup> there are exciting opportunities to conserve and enhance biodiversity in the Tamar Valley over the next five years and into the future. In response to the Defra's 25 Year Environment Plan there is a national commitment to create or restore 500,000 ha of wildlife-rich habitat, focusing on priority habitats. Within the AONB there are Biodiversity 2020 targets<sup>19</sup> identified for the Tamar Valley. The AONB Partnership will continue to work towards these both in core work and through the Tamara Landscape Partnership.

The landscape of the Tamar Valley is also shaped by its geodiversity. The varied geology of the area has long been recognised as significant, and there is potential scope to increase public awareness of the importance of the area for geology and minerals.

#### **Tamar Valley AONB targets:**

Woodland habitats = 5ha  
Traditional orchards = 12ha  
Hedgerows (assuming 2m wide) = 5ha  
Creation of open fresh water, eg 5 ponds (assumes mean pond size 0.05ha) = 0.25ha  
Arable field margins = 10ha  
Lowland Heathland = 10ha  
Lowland dry acid grassland = 10ha  
Lowland meadow = 1ha  
Coastal saltmarsh = 20ha

Original targets identified for the Tamar Valley as a contribution to Biodiversity 2020 targets in the 2014 – 2019 Management Plan.

## 5.2 Facts and Figures

58

sites  
designated for  
their  
conservation  
value across  
AONB

7

Sites of  
Special  
Scientific  
Interest

13

Regionally  
Important  
Geological Sites

2

Local Nature  
Reserves

33

County Wildlife  
Sites

1 Marine  
Conservation  
Zone

1 Special  
Protection Area

1 Special Area  
of Conservation

1 European  
Marine Site

Devon Priority  
Species

Tamar  
Specialities

Triangular club-  
rush

Allis Shad

European Smelt

The Tamar Valley is one of **11** focus areas for the National Lottery Heritage funded Devon Greater Horseshoe Bat Project



## 5.3 Forces for change

- 5.3.1 Brexit and Defra's 25 Year Environment Plan and practical implementation of legislation. Other Central Government policies and directives.
- 5.3.2 Cornwall's Environmental Growth Strategy and opportunities for implementation in the AONB.
- 5.3.3 Decline in wild bee populations and opportunities to enhance priority habitats within the AONB.
- 5.3.4 Movement restrictions and increased incidence of plant diseases both nationally and in the Valley landscape. Impact of climate change and plant disease informing species mix for future planting and impact on biodiversity.
- 5.3.5 Plastics debate and increased awareness, including agricultural plastics, and impact of macro and micro plastics.
- 5.3.6 Decrease in uptake and availability of new Countryside Stewardship agreements.
- 5.3.7 Quarry expansion in face of sparse/specialist resources impact on geodiversity and wildlife habitat.
- 5.3.8 The drive to reverse the general decline in biodiversity and achievement of net gain.
- 5.3.9 Opportunities to shape the post-Brexit future through investing in a natural capital approach to land management.
- 5.3.10 Increasing awareness of the effects of climate change and impact on biodiversity with a need to ensure habitats are resilient.



## 5.4 Objectives

- 5.4.1 Support the conservation and enhancement of priority habitat and reverse the general decline in biodiversity within the AONB, securing increase in the population of associated priority species, and improvements in ecological connectivity through habitat creation and restoration, focussing on natural capital and ecosystem services.
- 5.4.2 Ensure that geological sites in the AONB are identified, protected and actively conserved and their conditions monitored and that geodiversity is given a higher public and educational profile.

## 5.5 Policies

- 5.5.1 Support the identification, protection and enhancement of wildlife and geology within the AONB and its setting.
- 5.5.2 Work with landowners, charities, statutory agencies and funding bodies to establish and deliver large-scale landscape and habitat restoration projects.
- 5.5.3 Promote native species and awareness of impact of invasive species and biosecurity and be a source of best practice information.

## 5.6 Priorities for action

- 5.6.1 Contribute to recovering nature and enhancing the beauty of landscapes through the delivery of priority habitat targets and landscape scale initiatives.
- 5.6.2 Contribute to recovering nature targets through supporting initiatives to support priority species.
- 5.6.3 Support initiatives to promote and value the benefits and services provided by the natural environment.
- 5.6.4 Identify opportunities to raise awareness and improve access to the geological and earth heritage.
- 5.6.5 Identify biodiversity and geodiversity sites that are suitable for public access and seek to provide high quality educational interpretation and sustainable transport links where appropriate.
- 5.6.6 Support projects that reverse the decline in native pollinators and encourage farmers and landowners to adopt pollinator-friendly practices.
- 5.6.7 Review landscape management advice in the face of climate change.
- 5.6.8 Review non-native plant and animal threats in terms of pests and diseases and ecological impact in the Tamar Valley and prioritise deliverable actions.

# Biodiversity and Geodiversity

## Case Study

### Heath Fritillaries in the Tamar Valley AONB

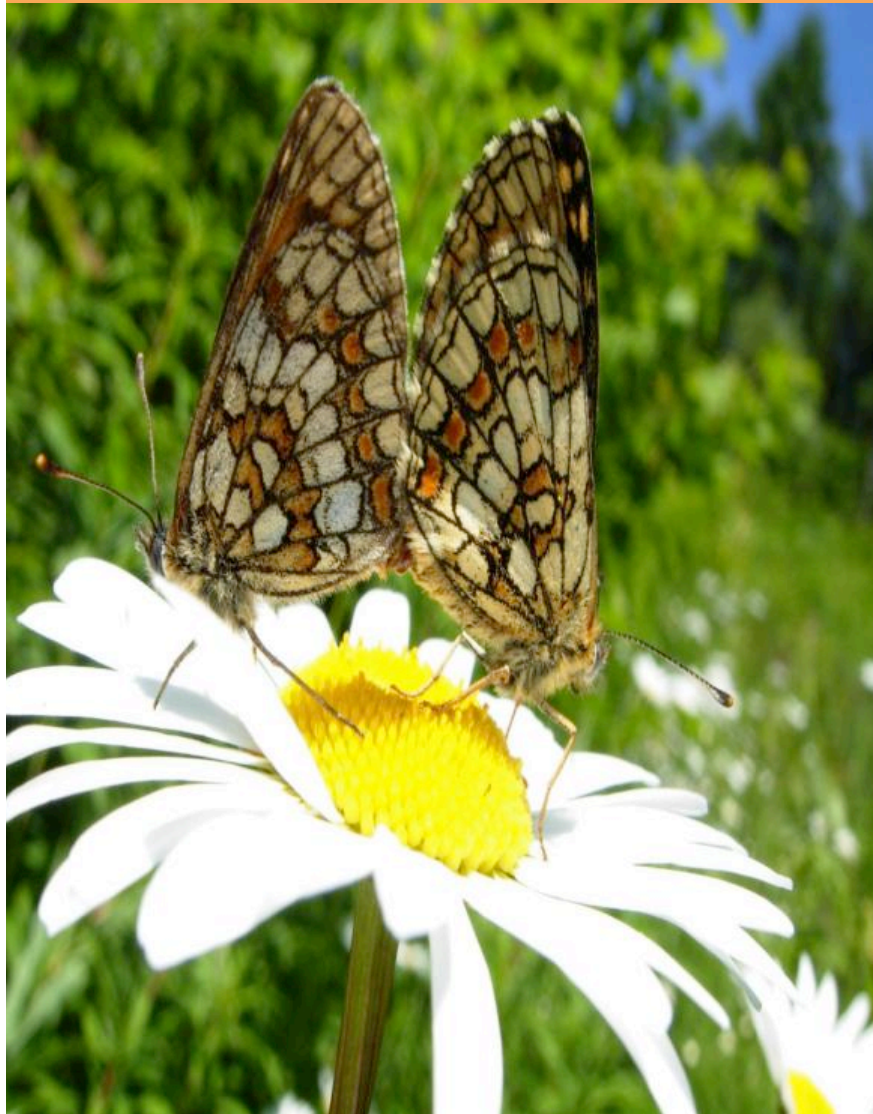


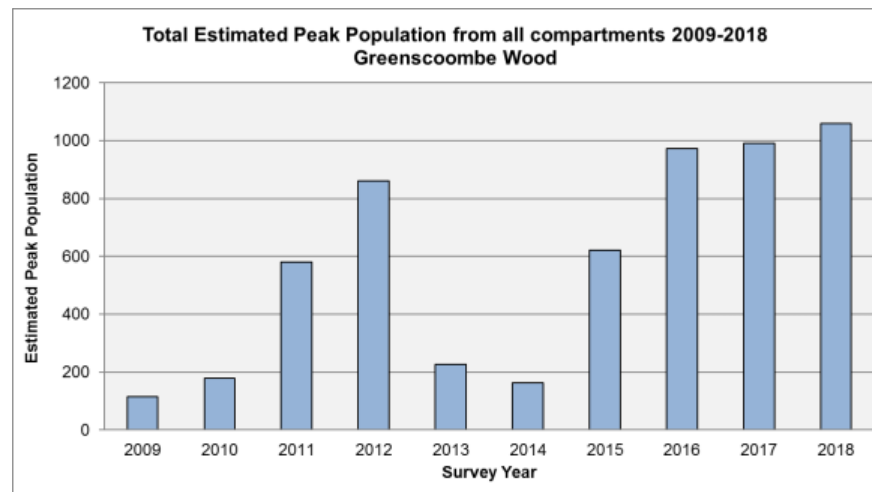
Photo: Heath Fritillary © Caroline Kelly, Butterfly Conservation

Greenscoombe Wood, near Luccombe, is one of the last remaining strongholds for the Heath Fritillary butterfly. Only four areas support this species in the whole of the UK. The woodland has been managed sensitively for Heath Fritillary over the last ten years or so, thanks to a positive working partnership between the landowners and Butterfly Conservation, with support from the local community who continue important butterfly monitoring work.

Management work is carried out annually to ensure an ongoing supply of suitable breeding habitat is maintained. The butterfly requires early successional habitat, ideally recently coppiced patches where its foodplant (Common cow-wheat) is abundant.

In the last 18 months, there has been additional management effort, supported by funding from a BIFFA Award, which has supported management work at both Greenscoombe Wood and also in adjacent sites, and the connecting corridors that join them up. Over 7ha of larch have been felled, and replanted with oak/hazel coppice, to ensure a continued supply of potential habitat in the future.

Work to improve connectivity between sites has been carried out with help from the Tamar Community Trust volunteers, who have helped to clear scrub and secondary woodland from flight routes, to better connect the newly created habitat patches with nearby historical breeding areas. The population dipped in 2013 and 2014 but has showed recovery from 2016 onwards with record numbers recorded in the summer of 2018. More work is still required to maintain suitable habitat, and efforts are ongoing, however the future for the Heath Fritillary at Greenscoombe Wood is now looking a lot brighter.



Data supplied by  
Butterfly Conservation

## 6.0 Rivers and Estuaries

### 6.1 Background

The tidal parts of the River Tamar, Tavy and Lynher are internationally important for wildlife. The Tamar Estuaries Complex Special Protection Area (SPA) is designated for wintering populations of little egret and avocet. The Plymouth Sound and Estuaries Special Area of Conservation (SAC) is one of the finest examples in the UK of estuarine communities that have adapted to varying salinity after the last ice age. The area is also designated as a European Marine Site (EMS) and a Marine Conservation Zone (MCZ). The sandbanks and large shallow inlets and bays are also internationally important.

A catchment based approach is crucial to safeguarding the riverine and estuarine habitat in the future. The estuaries are vulnerable to the effects of climate change, and so there will be a need to work with agencies and research organisations to identify and monitor indicators of change and to put mechanisms in place to mitigate adverse effects. The saltwater and freshwater marshes can provide a flood benefit and there are opportunities to create new habitats and opportunities for public access within the heart of the AONB. Upstream thinking approaches to partnership working are key to securing improvements in water quality which can be compromised by the legacy of mining in the area and some agricultural practices. It is also important to recognise the role that taking steps to improve the water environment within the AONB plays in helping protected areas beyond its boundaries, such as shellfisheries and bathing waters.

The Rivers Tamar, Tavy and Lynher, and their estuaries and tributaries, are the central defining feature of the designated landscape. These features also form significant cultural, political and physical boundaries. The AONB Partnership and Tamar Estuaries Consultative Forum (TECF) have identified concerns regarding the general management of rivers and their environments. These include the silting up of navigation channels; long-term sustainability of some flood defences, loss of quays and landing points, lack of riparian management, invasive species, decline in fish stocks and a desire for greater public access to the riverbank. The Tamar Estuaries Marine Biosecurity Plan<sup>20</sup>, published in 2018, establishes a guiding framework to reduce the risk of the introduction of new non-native species to the Tamar Estuaries area and to effectively manage existing non-native species, including invasive non-native species.

There have been conceptual discussions around the potential for a new type of Marine Park for Plymouth<sup>21</sup>, the Plymouth approaches and the estuaries complex including the Tamar, Tavy and Lynher, that are already some of the highest designated waters in the country. A Marine Park might provide opportunities to raise awareness of coastal waters as public assets and help to bring shared prosperity, broader public engagement and regeneration of deprived coastal communities. Initial funding has been secured to develop this proposal further.

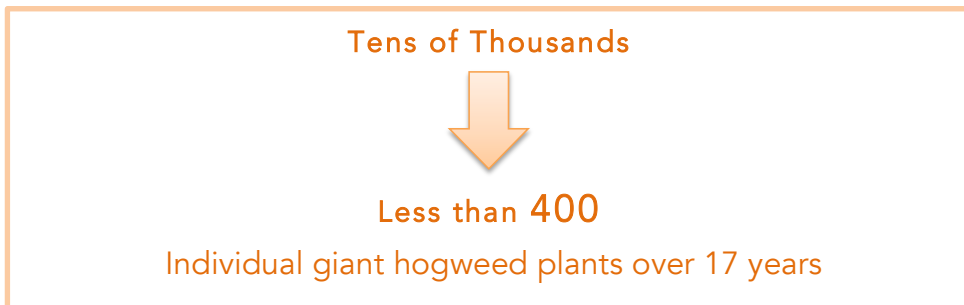
Working in partnership through the Tamara Landscape Partnership scheme will provide opportunities to continue to build on a catchment scale approach to the management of the river systems feeding into the Tamar, Tavy and Lynher complex and secure a more resilient future for the rivers that are such an iconic feature of the AONB landscape and provide a vital link to other protected areas downstream of the AONB.



## 6.2 Facts and Figures



River Tamar is only river in England with a population of **Allis Shad**



## 6.3 Forces for change

- 6.3.1 Demand for moorings, land-use changes affecting the water environment, increased numbers of recreational users and loss of ferry links and ferry crossing and impact on Tamar Valley Discovery Trail.
- 6.3.2 Tamar Catchment Partnership part of National Catchment Based Approach to management of rivers. Upstream thinking and ecosystem services. Increased levels of sedimentation as result of changes and intensification of farming practices.
- 6.3.3 Decline in recent decades in both commercial and fly-fishing and weakening of the cultural links between the rivers and local communities.
- 6.3.4 Increased effect of climate change on habitat and historic structures and changes in water flow due to channel realignment/removal of structures.
- 6.3.5 Potential for large-scale wetland creation schemes on the Tamar floodplain.
- 6.3.6 Potential for new Marine Park around Plymouth approaches, Plymouth Sound and the estuaries including Tamar, Tavy and Lynher.
- 6.3.7 New quays and landing points may result in disturbance to wildlife.
- 6.3.8 Pressure on fisheries and a decrease in populations of migratory fish in particular and the need to find sustainable fisheries practices.

## 6.4 Objective

- 6.4.1 Help to maintain high quality river systems and habitats, support sustainable opportunities for recreation and tourism and increase awareness of the river and estuarine environment and the opportunities they present for sustainable development, taking into account the needs of local communities.

## 6.5 Policies

- 6.5.1 Work in partnership to help deliver or support catchment scale initiatives or projects including identifying opportunities for natural flood management.
- 6.5.2 Conserve, expand and enhance the biodiversity of waterside areas to maintain those special qualities, which collectively contribute to the 'rare valley and water landscape' character.
- 6.5.3 Support measures that improve the management of the rivers and their catchments, and which enhance their cultural, historic, environmental and economic importance.
- 6.5.4 Seek opportunities to secure improvements to water quality for drinking water and biodiversity benefit.
- 6.5.5 Support a co-ordinated, strategic approach to improve access to the key reaches and viewpoints of the river with the aim to increase health and wellbeing, where compatible with the special qualities and purposes of the AONB designation.

## 6.6 Priorities for action

- 6.6.1 Identify and implement the role of the rivers and estuaries in creating solutions for floods and habitat resilience and develop riparian and coastal habitat improvement and restoration projects.
- 6.6.2 Promote increased use of, and access to, the river system and its cultural heritage as a focus for education such as 'river schools' and 'floating' or 'outdoor' classrooms.
- 6.6.3 Work with Tamar Estuaries Consultative Forum (TECF) to support and make appropriate management responses in relation to the European Marine Site – Managing Recreational Impacts Programme<sup>24</sup>.
- 6.6.4 Support initiatives to undertake additional baseline recording along the rivers and estuaries to identify management needs and opportunities.
- 6.6.5 Help to support and deliver catchment scale initiatives or projects.
- 6.6.6 Continue to record, conserve, enhance and interpret the historic quays and river-based historic features.
- 6.6.7 Support the treatment of invasive species (especially giant hogweed) through the Tamar Invasives Project.
- 6.6.8 Promote sustainable eco-moorings which minimise impact on the substrate using established best practice models.

# Rivers and Estuaries

## Case Study

### Tamar Invasives Project



The Tamar Invasives Project was created specifically to control invasive plants along the River Tamar corridor. The partnership of five organisations, Tamar Valley AONB, Environment Agency, Natural England, Cornwall Council and Cormac have been working together for the past 17 years to control invasive species in the riparian section of the AONB.

The main focus has been on the eradication of giant hogweed and the project has demonstrated considerable success by maintaining focus over this time. This has been achieved by surveying and control (herbicide treatment or hand digging on organic land).

The AONB has maintained landowner contact ensuring all landowners are aware of the project and its objectives. Ongoing vigilance and awareness of the situation is key to ensuring that giant hogweed doesn't start to spread again across the catchment. Each plant can produce up to 50,000 seeds, which can survive for up to 15 years!

Map evidence produced by Natural England shows a significant decline in occurrence of the species within the treatment area over the past 17 years. Numbers of plants have been reduced from tens of thousands to less than 400 individual plants in 2017 and 2018. However, recent flooding events in the tidal reaches and difficulties with gaining access and consistent treatment means that there are still challenges in the tidal areas.

The partnership has provided support to landowners, through help with identification and advice on treatment. Failure to treat threatens valuable habitats, shades out native plants and causes riverbanks to erode. However, to achieve collective and comprehensive treatment is a challenge.

It is vital to build on the success that the partnership has achieved over the last 17 years and to ensure that work can continue through the support and enthusiasm of landowners in the Valley and that the very modest investment to date is maintained.

**TamarValley**  
Area of Outstanding Natural Beauty





## 7.0 Environmental Quality and Climate Change

### 7.1 Background

Latest predictions from the 2018 Intergovernmental Panel on Climate Change (IPCC)<sup>25</sup> report have highlighted the urgent changes needed to address climate change on a global scale. More locally, impacts from extreme weather events will result in higher incidences of coastal and river flooding. The temperature rises will also impact on ecosystem dynamics, agricultural activities and pollinators.

On a more local scale, the maintenance and stewardship of the natural resources of the Tamar Valley AONB, especially its soils, water and minerals is critical in determining the future sustainability and productivity of the landscape. Issues such as diffuse pollution, soil erosion and land-use within the whole river catchment and estuary are ongoing concerns within the AONB.

The water environment is especially important in the AONB. As in most parts of the UK there is potential for harmful pollution from farming and industry. There are pollution risks from the legacy of mining throughout the AONB. These issues are mainly addressed through measures such as the Water Framework Directive (WFD)<sup>26</sup> and Marine Strategy Framework Directive (MSFD)<sup>27</sup>. However, there may be opportunities for the AONB Partnership to add value to these efforts. Some of the land in this catchment has been heavily mined in the past for metals, leaving a legacy of abandoned mines, unvegetated mining spoil tips and contaminated soils. Some agricultural practices are another source of contamination. South West Water have been working with landowners to reduce pollution as part of the Upstream Thinking Project<sup>28</sup>.

The State of the Environment report (2017)<sup>29</sup> summarises findings for the South West as follows:

#### Climate change

Projections for the climate in the South West suggest warmer, wetter winters and drier, hotter summers. Change in relative sea level is very likely to be more than 20cm but less than 69cm by the 2080s. The likelihood of extreme changes in climate becomes greater towards the end of the 21<sup>st</sup> century.

#### Renewable energy

The South West is rich in renewable energy resources. Trends indicate further growth of renewable energy is very likely despite recent cuts to subsidies.

#### Air Quality

The Clean Air for Cornwall Strategy<sup>30</sup> highlights the issues of poor air quality and brings together the action plans including Gunnislake and Tideford in the AONB and its setting as a result of road traffic.

Building resilience is a key element of the AONB Partnership vision and the Tamara Landscape Partnership will provide a platform to support this in the next five years.

## 7.2 Facts and Figures

How can we improve environmental quality?	
Catchment Sensitive Farming	Upstream Thinking
Ecosystem Services	Natural Capital
Increased Resilience	Controlling Invasive Species
Biosecurity	Air Quality
Ecomoorings	Tranquillity

## 7.3 Forces for change

- 7.3.1 Water Framework Directive (WFD) implications of new fish passes and water treatment facilities adjacent to historic mine sites – impact on these and on historic water structures and assets.
- 7.3.2 Increase in nitrates and runoff – increased sedimentation and effect on water quality.
- 7.3.3 Increase in discrepancy of seasonality with co-dependent species and rate of adaptation to climate change.
- 7.3.4 Large-scale renewables are less of a threat on the landscape now but still need watching brief and tight guidance for future changes in government policy.
- 7.3.5 Extreme weather events and impacts on the Tamar Valley AONB, particularly sea level rise, potential flooding events and drive for managed realignment.
- 7.3.6 Air quality figures – high levels in Tideford and Gunnislake within the AONB and neighbouring Plymouth and Saltash.
- 7.3.7 Increased charges for regulated waste disposal and resultant increase in fly tipping.



## 7.4 Objectives

- 7.4.1 Ensure effective conservation and management of the AONB's natural resources and features, its landform and landscape setting, water, mineral and soil resources, through the encouragement of sustainable land management.
- 7.4.2 Respond to climate change effects across all areas, as appropriate, and in particular will investigate renewable energy sources, opportunities and impacts.

## 7.5 Policies

- 7.5.1 Protect the natural resources and the special qualities of the Tamar Valley AONB from adverse impacts through the use of statutory and voluntary regulating mechanisms available amongst its member organisations.
- 7.5.2 Proactively promote and support activities that protect the natural resources of, and further the sustainable management of, the Tamar Valley AONB.
- 7.5.3 Investigate sustainable solutions for the provision of renewable energy of a suitable nature, scale and location within the AONB or its setting where this is compatible with the purposes of AONB designation.

## 7.6 Priorities for action

- 7.6.1 Promote activities that enhance the value of ecosystem services and natural flood management, such as riparian tree planting, by exploring the role of the Tamar Valley AONB Partnership in furthering the work identified in the Tamar Catchment Partnership<sup>31</sup> project and supporting delivery of future environmental land-management schemes.
- 7.6.2 Review the approaches available for the Tamar Valley AONB landscape to contribute to options for a low carbon economy.
- 7.6.3 Undertake research to better understand the implications of climate change and increasing weather extremes for farming practices and the potential impacts of such on communities, landscape and built heritage.
- 7.6.4 Undertake research to better understand the implications for sea level rise, and consequent habitat loss and mitigation proposals, and explore the Tamar Valley AONB role in delivering sustainable solutions.
- 7.6.5 Seek solutions to reduce mine pollution and risk of future events whilst meeting landscape and biodiversity targets including supporting rare and specialist species that require bare soil heap habitats.

# Environmental Quality and Climate Change

## Case Study

### Soil Carbon



Photo: © R Teverson

## Low Carbon Farming Project

Increasingly frequent episodes of heavy rainfall linked to climate change have led to an increased threat of flooding in the Tamar Valley. The ability of river catchments to absorb and retain water in itself is also related to the way that carbon is stored on the farm. Compaction of soil by the use of modern farm machinery has decreased the ability of the soil to behave like a sponge. Changes in soil structure accelerate surface runoff often taking soil with it, causing flooding downstream.

Within the soil itself micro-organisms perform complex tasks recycling nutrients and making them available to plant roots. These organisms function much better in soils that are rich in carbon as they need to feed on organic matter.

Much of the new research and good practice in this area comes from the organic movement and we are lucky in the Tamar Valley to have a dynamic group of organic farmers who are trialling new ways of managing soil sustainably.

Farm advisers working with Farming and Wildlife Advisory Group (FWAG) South West completed a pilot project in 2015 working with five farmers in the Tamar Valley to assess carbon storage on farmland and to look at practical methods of carbon capture in the Tamar catchment. The work was funded by the Environment Agency and the Tamar Valley AONB.

A public engagement event lead by FWAG South West Adviser, Sonia Oakes, held at Deer Park Farm, Lucket, in February 2015 attracted 18 participants. There is clearly an appetite to explore soil carbon further in the future.

The increased focus on low carbon farming and natural capital approaches to land management will be a theme within the Tamara Landscape Partnership to be taken forward during the development phase.





# People and Prosperity



## 8.0 Farming, Forestry and Land Management

### 8.1 Background

The distinctive landscape of the Tamar Valley has been shaped over thousands of years by successive generations of people who made a living from it. Although employment directly from land and water has been in decline from the last century, the Tamar Valley still has a relatively high percentage of the population employed in these industries.

#### Land Management

There is a degree of uncertainty around land management options post-Brexit but also opportunities going forward particularly through Defra's 25 Year Environmental Plan. The Tamara Landscape Partnership will provide the opportunity to develop new approaches to land management aims to ensure a resilient, wildlife rich future for the Tamar Valley AONB.

In the AONB, 67% of the land is farmed, and thus the management, business and environmental decisions of farmers, with regard to crops grown or livestock produced, all have a significant impact on the character of the landscape. The farming community will play a key role in continuing to shape the future of the Tamar Valley landscape, and the AONB will continue to support farmers and landowners to achieve this sustainably.

The Tamar Invasives Project<sup>32</sup> has been working to survey, monitor and treat giant hogweed and other invasive plants for 17 years throughout the AONB, and are now supporting, advising and encouraging many landowners to do this themselves. Recent work has concentrated on the treatment of giant hogweed.

#### Market gardening and growing

Alongside mining, the Tamar Valley was famed for its cherry and apple orchards and until recently supported a huge but very concentrated market gardening industry. There is potential to encourage the growth and revival of the market garden industry that once dominated the Valley and to stimulate and deliver a sustainable, profitable and vibrant land-based economy. The Tamar Valley AONB supports the promotion of local produce and the Tamara Landscape Partnership will provide an opportunity to support additional training in this sector and develop connections between producers in the Valley and the food networks in neighbouring communities. Beekeeping provides another key input to the market gardening economy both in terms of pollination and as a sector in its own right. There is an opportunity to develop approaches focusing on pollinators and on good management practice.

#### Forests, woods and hedges

The Tamar Valley's forest, woodland and hedged landscapes are a rich and distinctive wildlife resource providing a wide range of products and ecosystem services.

The AONB Partnership has for some time been working to create and develop a viable new market for timber and woodfuel in particular in the Tamar Valley, especially from our hedges, to improve management and gain economic, biodiversity and landscape benefits. There is a strong market for woodfuel and other wood production at the time of writing the Plan. Access to woodlands and the skills to manage them sustainably are now even more important barriers to the environmental and economic benefits that could come from woodland management and creation. The Tamara Landscape Partnership provides an opportunity to start to address this and support landowners and contractors in the post-Brexit economy.



## 8.2 Facts and Figures

Total amount of agricultural land increased by

**1,257ha**

Source: Agricultural Census (2016)

Total number of agricultural holdings



Source: Agricultural Census (2016)

Farm woodland currently under Environmental Stewardship agreements

**224ha**

**2,159ha**  
actively managed woodland

**58%**  
of woodland in AONB

Source: Forestry Commission (2018)

Total woodland cover across the AONB since 2012 by

**20.57ha**

Source: National Forestry Inventory Survey (2012) and latest data for 2016

**367.40ha**

Ancient Semi Natural Woodland

**1,256.67ha**

Plantations on Ancient Woodland Sites (PAWS)

within the AONB

## 8.3 Forces for change

- 8.3.1 Uncertainties around Brexit and the resources available to deliver the requirements of Defra's 25 Year Environment Plan and reduction in availability and take-up of Countryside Stewardship schemes.
- 8.3.2 Opportunities to play a key role in the delivery of transitional post-Brexit land management schemes.
- 8.3.3 Higher profile around ecosystem services and natural capital, and green and blue infrastructure. Opportunities for new habitat creation particularly wetlands.
- 8.3.4 Impact of new farming practices which may have impact on the landscape. Agricultural plastics, damage to verges with larger machinery. Increase in scale of agricultural buildings and impact on the landscape.
- 8.3.5 Growth of local food sector and support for small producers and other resources such as woodfuel.
- 8.3.6 Loss of diversity of produce and the impact on landscape, wildlife and biosecurity.
- 8.3.7 Anecdotal evidence suggests an increase in game rearing and shooting, potentially impacting on the biodiversity and tranquillity of the Tamar Valley AONB.
- 8.3.8 Growth in the market for timber and woodfuel, which is leading to an increase in woodland management. Although usually beneficial there are instances of occasional unlicensed felling making it even more important to raise awareness of sustainable management.
- 8.3.9 Increasing population of deer and squirrels is having an impact on natural regeneration within and outside woodlands.
- 8.3.10 Impact of threats to lease renewal could have a significant effect on long-term management and legacy of projects and assets.
- 8.3.11 Loss of direct payments for forestry during the life of this Management Plan and loss of ash through dieback.

## 8.4 Objective

- 8.4.1 Support sustainable systems of land management that conserve and enhance the special qualities of the AONB and contribute to a green and prosperous local economy.

## 8.5 Policies

- 8.5.1 Support land management systems that are environmentally sustainable, economically viable and are compatible with the landscape character and purposes of the AONB designation.
- 8.5.2 Promote the management of small woodlands and hedges, together with new woodland creation where appropriate.
- 8.5.3 Pursue the application of ecosystem services and natural/heritage capital approaches to land management.
- 8.5.4 Support the rural economy and local communities through the post-Brexit agri-environment process where this helps to sustain the special qualities and purposes of the AONB.

## 8.6 Priorities for action

- 8.6.1 Support and develop landscape-scale integrated initiatives and projects.
- 8.6.2 Pilot environmentally and landscape sensitive farming, sustainable land management and forestry approaches.
- 8.6.3 Seek opportunities to enhance and increase biodiversity and create nature networks.
- 8.6.4 Support initiatives to improve water resource management and water quality, and help to deliver Water Framework Directive (WFD) targets.
- 8.6.5 Explore ecosystem services and natural capital approaches to farming and land management.
- 8.6.6 Influence priorities and support the delivery of post-Brexit environmental schemes working with landowners and managers to help target and co-ordinate local partnerships to deliver landscape-scale programmes such as the Tamara Landscape Partnership.
- 8.6.7 Encourage and support the re-connection of communities with farming and food and seek opportunities to support a circular economy with respect to produce from the AONB.
- 8.6.8 Continue to explore and promote sustainable management of woods and hedges for timber and options for woodfuel.
- 8.6.9 Promote management practices for road verges and small vernacular details such as granite gateposts and traditional hedgebanks within the farmed landscape.
- 8.6.10 Support the restoration of Plantations on Ancient Woodland Sites (PAWS) to broadleaved or mixed systems and support of silvicultural systems that provide a more stable ecosystem for biodiversity, water and carbon.
- 8.6.11 Encourage woodland owners to move towards more species and age diversity to make their woodlands more resilient in the face of extreme weather and increasing prevalence of pests and diseases and promoting improved biosecurity particularly in relation to proposed tree planting schemes.



# Farming, Forestry and Land Management

## Case Study

### Crocadon Wood and Hedge Event



Photo: © Lesley Strong/Tamar Valley AONB

Hedges and woodlands are key elements that make the Tamar Valley AONB a landscape to cherish.

The Crocadon Wood and Hedge Event held in February 2016 focused on the latest updates on woodfuel options and sources of funding for management of wood and hedge resources.

The Tamar Valley AONB team were supported by the Forestry Commission to provide this event for farmers, woodland owners and forestry contractors to explore opportunities for timber and fuel from woods and hedges and to continue the momentum of enthusiasm for woodfuel built up during the EU funded Cordiale project.

- Kate Tobin/Garin Linnington from the Forestry Commission, discussed opportunities for wood and hedge management and grants available.
- Dr Rob Wolton spoke about Hedges: an exciting new, viable source of heat energy for the farm.
- Caroline Hanlan from South & East Cornwall LEADER outlined support for rural wood-based businesses.

The event also featured practical demonstrations of machinery available to landowners and contractors looking to invest in equipment to make their woodfuel operations viable.

The latest equipment, including a branchlogger, mobile sawmill and firewood processor, and tree shears, amongst others, were in action during the day with a range of demonstrators attending from across the South West and beyond.

70 people attended the event and feedback demonstrated that there is still an appetite to explore woodfuel options in the Tamar Valley. By continuing to promote the potential to add value to timber harvested from our woods and hedges in the Tamar Valley area, we can help to sustain the AONB landscape in the long term.



## 9.0 Access, Recreation and Tourism

### 9.1 Background

The Tamar Valley is an oasis of tranquillity and is valued by both local people and visitors as a place to relax and to enjoy the scenery. It has escaped excessive tourism development; to date the low-key tourism infrastructure is largely sympathetic to the Valley heritage and in scale with the landscape and environment. Tamar Valley Tourism Association (TAVATA) is the main organisation supporting tourism providers in the AONB. The links between protected landscapes and tourism are becoming much clearer. With trends suggesting that heritage and rural tourism are expanding, there will almost certainly be a growth in tourism and recreation in the Valley, especially as the increased cost of travel and awareness about carbon footprints are encouraging people to holiday in the UK. Tourism plays a key role in the economic vitality of the area and this value has been highlighted by recent reports assessing the economic impact of this sector in the Tamar Valley AONB. The AONB commissioned a report by the South West Research Company on the economic impact of the Tamar Valley AONB<sup>33</sup> on the visitor economy in 2016 and the 'Valuing the Tamar Valley Line'<sup>34</sup> report was commissioned by the Devon and Cornwall Rail Partnership in 2018.

There is scope to reinvest in the area, improve facilities and help sustain local services. The emphasis should be on year-round visitors, who will support the local accommodation providers and local food producers. However, much care is needed to ensure that the impacts are managed so that facilities and services complement the landscape and reflect the carrying capacity of the Valley, especially in relation to increased road traffic and congestion. The rivers and the Tamar Valley branch railway line provide important opportunities for travel by public transport, and the increasing popularity of cycling could be supported through improved cycling routes and/or the development of cycle networks.

The highways network, including public rights of way, verges and heritage features are intrinsically important assets for the public to appreciate the landscape and access other recreational opportunities. The Tamar Valley Discovery Trail provides a long distance route through the AONB and there is an excellent network of rights of way and permitted routes making the Tamar Valley a great destination for walkers.

The rivers are important as a leisure and tourism resource and there are a number of small boatyards, gig clubs and marinas mostly in and around the lower parts of the estuary. However, there are limitations to the growth of water-based recreation due to the environmental sensitivity of the estuary. There has been a significant extension of the Zone of Influence of new development having a recreational impact upon the Tamar Estuaries European Marine Site<sup>35</sup> (comprising the SAC and SPA), this has been extended to 12.3km from the boundary of the European sites, so effectively covers the entirety of the Tamar Valley AONB. The Plymouth Sound and Estuaries Recreational Impact Study (2017)<sup>36</sup> has provided some baseline scoping data around the use of the estuary.

There is an emerging body of literature on the benefits of physical activity for overall health and wellbeing. Walking has been shown to benefit mental health by reducing physical symptoms of anxiety, improving sleep quality, cognitive development and performance, and increasing people's psychological wellbeing. The greatest psychological benefits of walking have been found in a social environment with specific outdoor features (e.g. greenery and water). Walking has a greater restorative effect for adults of poor mental health (compared to adults of good mental health) in rural (as opposed to urban) settings. 'Walking for Health' groups in and around the Tamar Valley have provided opportunities to achieve these benefits for free through local, easy walks, tailored and led by trained walked leaders. There is potential to explore other forms of ecotherapy with the AONB providing an ideal tranquil land and soundscape to facilitate this.

## 9.2 Facts and Figures



Value of Tourism for the Tamar Valley AONB (2016)	
<b>Key Facts</b>	
72,000	Staying visitor trips
305,800	Staying visitor nights
£13,573,000	Staying visitor spend
606,000	Day visits
£14,791,000	Day visitor spend
£28,364,000	Direct visitor spend
£676,000	Other related spend
£29,040,000	<b>TOTAL VISITOR RELATED SPEND</b>
£33,489,000	<b>TOTAL BUSINESS TURNOVER SUPPORTED</b>
710	Estimated actual employment
510	FTE employment
<small>Source: South West Research Company</small>	

## 9.3 Forces for change

- 9.3.1 Plymouth City Council's Strategic Partnership's 'A Vision for Plymouth' 2003<sup>37</sup> projected aspired growth in population to 300,000 by 2026. Also housing development pressures at edge of the AONB including expansion of Launceston towards the northern boundary all impact on demand for water- and land-based recreation.
- 9.3.2 National initiatives such as Park Run and mountain biking opportunities around Gawton are bringing new audiences to the AONB but also highlighting some capacity issues.
- 9.3.3 Opportunities for sustainable tourism based around predicted visitor growth and value of tourism to local economy.
- 9.3.4 Tamar Tender Loving Care (TLC) opportunities for visitor giving and supporting projects across the AONB.
- 9.3.5 Increased focus on health and well being initiatives and opportunities for the AONB to deliver programmes.
- 9.3.6 Opportunity to reinstate the ferry link across the Tamar at Calstock would provide greater recreation opportunities by providing additional walk links and connect path networks across the Tamar and between railway stations.
- 9.3.7 Heritage Lottery funded Tavistock Guildhall project will provide a visitor gateway to the Area 10 section of the World Heritage Site and an opportunity to promote the Tamar Valley AONB.
- 9.3.8 Mayflower 2020 celebrations in Plymouth will provide opportunities to promote the Tamar Valley AONB as a destination to a world-wide audience.

## 9.4 Objective

- 9.4.1 Promote the development of integrated access, recreation and tourism facilities and services which are compatible with the purposes of the AONB designation, and that contribute effectively to the local economy.

## 9.5 Policies

- 9.5.1 Promote opportunities for the improvement of rights of way and sustainable transportation, the development of recreation and tourism facilities, including use of the river as long as this is compatible with the core purposes of conserving, protecting and enhancing the AONB.
- 9.5.2 Promote the use of sustainable transport throughout the Tamar Valley AONB, working collaboratively with transport providers, visitor attractions and communities.
- 9.5.3 Work with others, including Local Access Forums, to provide high quality access to the AONB for as wide a range of users as possible.
- 9.5.4 Encourage sustainable development in tourism which has a minimal or positive effect on landscape and helps to deliver better employment and services to the local area.
- 9.5.5 Promote and create opportunities for more people to enjoy healthy outdoor activities improving connections with nature and heritage.

## 9.6 Priorities for action

- 9.6.1 Lead the development of a spatial strategy for access, recreation and tourism in the Valley compatible with AONB special qualities and designation, working with public and private partners.
- 9.6.2 Develop and promote a series of 'days out' in the Valley, paying attention to opportunities to promote local attractions and services and to the use of sustainable transport options where available.
- 9.6.3 Promote the value of the landscape to local businesses including supporting TAVATA and growing the visitor gifting initiative of Tamar TLC.
- 9.6.4 Maintain and promote existing and new opportunities for all forms of recreation within the Tamar Valley AONB, with particular focus on joining up existing routes, providing easy access routes for all user groups, creating circular routes and promoting heritage assets where possible.
- 9.6.5 Continue to work with key local bodies such as TAVATA, Tamar Community Trust, CoaST and the National Trust, among others, to maximise opportunities for sustainable tourism and recreation, promoting the AONB as a destination to provide economic integrity and support living communities.
- 9.6.6 Develop the Valley as a resource for promoting people's health and wellbeing, including developing new 'Walking for Health' and outdoor activity groups, and exploring the potential for horticulture as a therapeutic approach.
- 9.6.7 Explore options for accommodating some additional responsible boat use to support the local economy as long as this does not impact on the biodiversity and tranquillity of the AONB.
- 9.6.8 Support digital technology infrastructure delivery to provide new opportunities to businesses and residents while reducing the need to travel.



# Access, Recreation and Tourism

## Case Study

### Tamar Community Trust



The Tamar Community Trust (TCT) work alongside the Tamar Valley AONB, undertaking work that helps protect, conserve and promote the natural landscape and heritage of the Tamar Valley.

TCT aim to meet these objectives mainly by carrying out practical tasks, such as maintaining and creating trails, building bridges, erecting signs, managing woodland and more.

As part of the Tamar Valley Mining Heritage Project legacy, TCT have a dedicated group of volunteers who maintain the Tamar Trails and facilities on behalf of West Devon Borough Council.

There is a regular programme of work days focussing on various sections of the Trails interspersed with Valley Volunteer training days where volunteers have the opportunity to develop their practical skills that support the practical maintenance of the Trails and at other sites across the Tamar Valley AONB.

TCT also maintain access at Wacker Quay on the River Lynher, one of the few publicly accessible waterside sites in this section of the AONB. The Trust took over a 10-year licence from the Ministry of Defence in 2011, enabling Natural England to help with the provision of an Environmental Stewardship package.

The group is also working with Historic England to carry out work to improve the condition of sites on the Heritage at Risk register that are also publicly accessible. The first site they will be working on is Okel Tor, near Calstock. Volunteers will also receive training during this project that will provide them with the skills and expertise to stabilise historic remains and prevent them from further deterioration.

Tamar Community Trust

Tamar Valley  
Area of Outstanding Natural Beauty

## 10.0 Planning and Development

### 10.1 Background

The rich heritage and scenic qualities of the Tamar Valley draw people to live here. Therein lies a need for achieving a balance between sustaining the landscape character and a vibrant living countryside. Due to the challenges expected with increased population growth, along with the consequences of a changing climate, wise choices and informed decisions about future development must be made in order to sustain the integrity of this unique area for the benefit of future generations. Neighbourhood plans will provide an additional community-led steer on planning decisions and proposed development as they become adopted across the parishes both within the AONB and its setting.

Owing to the intimate nature of the landscape character arising from its topography, development, even on a small scale, can have a damaging impact on the AONB. It is important that Section 3.0 - Landscape Character in this Management Plan is read in conjunction with the planning section. Development in the setting of the AONB can also have negative impacts on the protected landscape. Part of the AONB also forms part of Area 10 of the Cornwall and West Devon Mining Landscape World Heritage Site and it is important that this is also given full consideration in any relevant planning issues.

The revised National Planning Policy Framework (NPPF)<sup>38</sup> published on 24 July 2018 sets out the Government's planning policies for England and how these are to be applied. The revised NPPF through paragraph 172 reaffirms that **"Great weight should be given to conserving and enhancing landscape and scenic beauty"** in AONBs and that the designation has **"the highest status of protection in relation to these issues"**.

This is reflective of the statutory duty on all **"relevant authorities"** laid down through Section 85 of the Countryside and Rights of Way Act 2000, as amended, when exercising or performing any functions in relation to, or so as to affect, land in an AONB, to have regard to the purpose of conserving and enhancing the natural beauty of the AONB. Defra's 25 year Environment Plan published in 2018 also states that **'while development is not prohibited in National Parks or AONBs, major development should only take place in exceptional circumstances'**.

As all of the above makes clear, development is not automatically prevented in the AONB or its setting. However, there is legislative duty and a policy directive that the landscape character and scenic beauty of the AONB is safeguarded in the national interest. For development to be supported in this context, it is required to ensure that it will conserve or enhance the purposes of the designation, and with regard to major development, additionally demonstrate that exceptional circumstances exist.

The revised NPPF now also gives ancient woodland and ancient and veteran trees the highest possible level of protection in planning law 'exceptional only', putting it on a par with the historic environment. NPPF Para 175 reads as follows:

**'When determining planning applications, local planning authorities should apply the following principles: [...]**

**c) Development resulting in the loss or deterioration of irreplaceable habitats (such as ancient woodland and ancient or veteran trees) should be refused, unless there are wholly exceptional reasons<sup>58</sup> and a suitable compensation strategy exists;'**

## 10.2 Facts and Figures

### The National Picture

Nationally, AONBs are under growing pressure from large housing developments and the scale of this, both in applications and approvals, has increased significantly in the past five years.

Source: Beauty betrayed - CPRE (2017)

Since 2012,  
**15,485** housing units have been approved within AONBs, with an increase of **82%** between 2012-13 (2,396 units) and 2016-17 (4,369 units).

Source: Beauty betrayed - CPRE (2017)

Average number of units per application approved in 2015 – 2017

**43**  
compared with  
**36**  
in previous three years

Source: Beauty betrayed - CPRE (2017)

### Locally

**667**  
Planning applications in AONB and its setting reviewed by the AONB in last five years

**202**  
Planning applications in AONB and its setting reviewed by the AONB in 2018

## 10.3 Forces for change

- 10.3.1 Revisions to National and Local Policy will influence future development in the AONB and setting.
- 10.3.2 Development pressure within the AONB designation area and its setting and impact on the landscape's special qualities. Significant proposals for additional housing in major settlements close to the boundary of the AONB, particularly Launceston to the north, Plymouth/Saltash to the south, and Tavistock to the east.
- 10.3.3 Need for affordable homes for local people within AONB.
- 10.3.4 Unsympathetic agricultural-related development is having a significant impact on the scale of buildings, materials and design in some of the most rural and remote settings.
- 10.3.5 Incremental changes and some types of permitted development are having a cumulative effect on the character and local distinctiveness of the AONB. Pressures from renewables has moved from large-scale schemes to incremental growth of domestic installations.
- 10.3.6 Loss of distinctive small-scale locally typical architectural features due to lack of awareness of cultural and landscape importance.
- 10.3.7 Proliferation of large buildings, hard standings, alternative land uses, conversion of farm buildings and associated impact on tranquillity.
- 10.3.8 Ridgeline development and development that works against the topography and grain of settlements can impact on landscape, eg. non-linear development in locations with linear settlement patterns.
- 10.3.9 Even small-scale development can be very impactful and can hugely influence the quality of the landscape, for example, along the river edge.

## 10.4 Objective

- 10.4.1 Ensure that the Tamar Valley AONB's purpose and objectives are fully recognised in the planning decision making process and local planning policies.

## 10.5 Policies

- 10.5.1 Encourage and ensure that natural beauty criteria and the Tamar Valley AONB's special qualities are assessed by Local Planning Authorities when considering any scale of planning applications in or within the setting of the AONB following the procedures and guidance set up in Annex 1c.
- 10.5.2 Support and raise the awareness that Local Planning Authorities "shall have regard" to the purposes of the designation of the Tamar Valley AONB and statutory duties of the AONB as stated in Section 85 of the Countryside and Rights of Way Act (CRoW) 2000.
- 10.5.3 Develop and promote the use of technical toolkits to enable the objective assessment of impact on the natural beauty of the AONB and its special qualities.
- 10.5.4 Provide and promote guidance for sustainable development in the context of the AONB designation.
- 10.5.5 Promote and use the guidance in Annex 1c that provides guidelines about major development within the context of the AONB designation.
- 10.5.6 Ensure development in the AONB that also impacts on the WHS reflects the policies and guidelines set out in the WHS Management Plan and Planning Guidance.
- 10.5.7 Ensure development in the AONB maintains or delivers environmental growth and cultural capital, conserving and enhancing landscape features that are distinctive or typical of the AONB.
- 10.5.8 Encourage development to be sustainable and respect, conserve and enhance the AONB's special qualities, distinctive features and heritage.
- 10.5.9 Actively promote land management systems and related development that are environmentally sustainable, economically viable, in scale with their landscape and in context and compatible with the purposes of the AONB designation.



## 10.6 Priorities for action

- 10.6.1 Provide guidance and supporting toolkit to planning officers, elected Members and developers as to how the statutory duty should be exercised through the planning system.
- 10.6.2 Provide locally relevant guidance to supplement the National Planning Policy Framework (NPPF) with reference to planning in protected areas.
- 10.6.3 Contribute to pre-application discussions on major developments within and in the setting of the AONB.
- 10.6.4 Respond to planning consultations and offer technical advice where appropriate, in line with our planning processes and any prescribed timescales.
- 10.6.5 Promote the importance of the AONB landscape to Parishes developing Neighbourhood Plans and to provide technical advice to ensure AONB priorities are included in these plans.
- 10.6.6 Support Local Planning Authorities to ensure that developments are sustainable in their design, construction, technology and landscaping, protect the AONB's natural resource and enhance its special qualities.
- 10.6.7 Ensure that development outside the AONB boundary respects its setting.
- 10.6.8 Ensure that ancient woodlands and ancient and veteran trees are afforded sufficient protection in line with revised NPPF in planning applications.
- 10.6.9 Promote the development of design guides for residential and agricultural buildings within the AONB and in its setting.
- 10.6.10 Promote the use of 2016 Campaign to Protect Rural England dark skies data<sup>39</sup> and the Environmental Zones and associated design guidance promoted by the Institution of Lighting Professionals.
- 10.6.11 Encourage the development and use of Landscape Sensitivity Assessments based on Landscape Character Areas across the AONB.

# Planning and Development

## Case Study

### Good practice in the Tamar Valley AONB



### A theoretical example

In this theoretical case study of best practice a proposed development site has been identified on the edge of a village in the Tamar Valley AONB and there is an identified local housing need for affordable 2 and 3 bedroom houses. The section of land concerned is surrounded by an established Cornish hedge and there are views across the site from a public footpath running through adjoining fields.

There is an objective process that can be followed to inform development proposals. The key is to achieve an acceptable scheme that fits with the AONB policies around conserving and enhancing the landscape character of the area. One of the key policies is the determination as to whether the proposal would constitute major development\* impacting upon the AONB.

The National Planning Policy Framework (NPPF) affords the landscape character and scenic beauty of the AONB the highest level of protection and requires the proposal to demonstrate accordance with the AONB Management Plan. Effects are not only assessed in terms of visual impact (scenic beauty) but also on landscape and seascape character. Landscape Character Assessments are produced by the local planning authority and the Landscape Character Areas and Special Qualities/Special Features are annexed as part of the Management Plan (2a and 2b).

When considering development within the AONB it is crucial to reflect the intimacy and sensory perception of the area and its scale in the landscape. Use of locally distinctive materials and 'design' features are also encouraged along with the layout and orientation of historic housing patterns established locally that add to local distinctiveness and the landscape character of the Tamar Valley.

A Landscape Visual Impact Assessment (LVIA)<sup>40</sup> would be carried out to assess the potential impact of development on the landscape from key viewpoints and of its setting within the landscape. In terms of this proposal, it is key that boundary hedgerows are retained and if further screening planting is required ensure biodiversity enhancement using locally sourced trees. Other recommendations would be the retention of key views from the footpath and measures taken to keep light levels to a minimum.

Further guidance on Planning can be found in Annex 1c of the Management Plan.

\*Footnote 55 of the NPPF explains that 'For the purposes of paragraphs 172 and 173, whether a proposal is 'major development' is a matter for the decision maker, taking into account its nature, scale and settings, and whether it could have a significant adverse impact on the purposes for which the area has been designated or defined'.

## 11.0 Communities and Culture

### 11.1 Background

The Tamar Valley has a strong cultural identity that transcends political boundaries and gives the area a unique character. The communities and cultures have shaped the AONB landscape and this is embodied within the historic environment of the Valley.

Through various projects, such as research into the market gardening industry, historic daffodils, mining and other aspects of our rich heritage, the AONB has helped to rekindle the strong cultural identity of the area. Drawn to the Valley has a growing role in the creative response to the Valley landscape and heritage.

Heritage Lottery funded projects including the two-year Helping Hands for Heritage programme and the one-year Heralds of Spring project have continued to provide opportunities to both engage with communities and to gain useful knowledge about the assets of the Tamar Valley which can inform the management of the AONB in the future.

The AONB were successful in securing funding from the Connecting Actively to Nature programme<sup>41</sup> to deliver a series of healthy walks in and around Bere Alston. These walks have proved to be very popular and the benefits have not only been physical. There have been many positive social outcomes too. The AONB's Sustainable Development Fund (SDF) continues to provide support to a wide range of community projects across the AONB.

Conserving and enhancing a sustainable and functioning landscape, balanced between community, economy and environment, is one of the biggest challenges for the AONB Partnership both within the AONB and in neighbouring areas including Plymouth. The development stage of the Tamara Landscape Partnership provides an excellent opportunity to undertake some key work around connecting communities with the Tamar Valley and the cultural roots that make it special. Communities are constantly changing, and with support and encouragement they can actively plan for the future to meet their needs and cherish their heritage.

The development phase of the Tamara Landscape Partnership will also provide opportunities to support communities and explore post-Brexit economic options with a range of sectors across the AONB and beyond.

There are great opportunities to celebrate the Tamar Valley AONB and culture of the Valley during the 25<sup>th</sup> anniversary of the designation in 2020 and make it a real community celebration of this special place.

## 11.2 Facts and Figures



### Connecting Actively to Nature programme Bere Alston Healthy Walks

**68** individual adults took part  
total of **283** walkers over **12** weeks  
Adults per walk ranged from **18** to **32**  
Average number per walk **24**  
**5** individual children took part  
**2** volunteer walk leaders

## 11.3 Forces for change

- 11.3.1 Pressures that may result in creating closed communities or dissolving them altogether, making encouragement to celebrate cultural identity difficult. Reduced community identity. Reduced awareness of cultural roots and connection with landscape with lifestyle changes and dilution of intergenerational knowledge.
- 11.3.2 Rising house prices and lack of affordable homes with resultant impact on local communities. Lack of, and potential decline in, local services. Increased competition from supermarkets and on-line shopping.
- 11.3.3 Declining opportunities for employment and rural industries but remote working opportunities increasing will show a shift in working patterns within the AONB and impacts on communities.
- 11.3.4 Opportunities have been generated by a change in sources of community funding including crowdfunding available for groups – eg Cornwall Council’s Grow Nature Seed Fund<sup>42</sup>, Cornwall’s Environmental Growth Strategy and SeaMoor Lotto<sup>43</sup> for communities within the West Devon Borough and South Hams District Council boundaries.
- 11.3.5 Food security and the role of Tamar Grow Local and other market gardening opportunities. Community growing initiatives and opportunities for social resilience in food production.
- 11.3.6 Social prescribing and opportunities presented by the evidence of benefits of health and wellbeing on being engaged with special places such as AONBs. There are opportunities to emphasise Health and Wellbeing across the Management Plan themes.



## 11.4 Objectives

- 11.4.1 Encourage and support communities in understanding and appreciating cultural identity and traditional practices within the AONB, and to maintain and enhance these.
- 11.4.2 Support initiatives that contribute to a sustainable future for communities within the AONB, consistent with the AONB's purposes.

## 11.5 Policies

- 11.5.1 Work with communities to improve understanding of the AONB's special qualities and encourage wide communication of these.
- 11.5.2 Encourage and support local communities to celebrate their cultural identity and sense of place through events and activities that reinforce the cultural traditions of the AONB.
- 11.5.3 Help communities explore and understand the value of the AONB, why this area is special and what they can do to help keep it this way.
- 11.5.4 Encourage and support communities to be vibrant and sustainable and to meet local needs in the 21<sup>st</sup> century.

## 11.6 Priorities for action

- 11.6.1 Explore opportunities and priorities for continuing the Tamar Valley AONB's practice of community-led activities.
- 11.6.2 Continue to promote creativity and traditions inspired by the landscape.
- 11.6.3 Celebrate 10 years of the Tamar Valley Centre in 2019 and 25 years of the AONB designation in 2020.
- 11.6.4 Develop and build on the Heralds of Spring project to link communities with the cut flower growing heritage and their landscape today.
- 11.6.5 Assist and encourage communities in the development of Neighbourhood Plans to ensure that the landscape character and special qualities of the AONB are taken into account in the planning process.
- 11.6.6 Investigate the status of the sustainability of community services within the AONB and what role the AONB Partnership can best play to address the issues identified.
- 11.6.7 Continue to grow and expand the range of walks and regular outdoor activities offered in the AONB such as Walking for Health and the Walk and Talk groups and a broad range of opportunities for volunteering for new and existing volunteers.
- 11.6.8 Support the Connecting Actively to Nature Project in Devon and deliver local activities.

# Communities and Culture

## Case Study

### Connecting Actively to Nature Programme Bere Alston Healthy Walks



The Tamar Valley AONB was invited to attend a Community Wellbeing event held at the start of 2018 in Bere Alston and there were a number of enquiries from people in the village who said they would be keen for a walking group to be set up locally.

Funding of £2,800 was secured by the AONB from the Connecting Actively to Nature (CAN) programme, led by Active Devon. The CAN project's aim is helping the over 55s to get more active in Devon's beautiful natural environment.

The Healthy Walks programme started in Bere Alston in September 2018. The walks were taken at a steady pace and aimed at people who were looking to improve their health. Although the target audience was over 55s who were inactive, everyone was welcome to join the group for the free weekly walks.

The initial programme of 12 weeks was devised to gauge the level of interest and support and comprised of a series of easy 30-minute walks in Bere Alston and the surrounding area.

Each walk was supported by two fully trained walk leaders providing encouragement and finished at Hope Cottage Café for a well earned cup of tea or coffee. 68 individual adult walkers took part and these adults did a total of 283 walks over 12 weeks. The average number of adults per walk was 24.

The outcomes have gone beyond improvements in physical activity and the social benefits have been additional bonus. Many members of the group now meet socially between the walks to engage in other community activities.

The project has been a resounding success and has been extended for a further 12 weeks. The hope is that walk leaders will come forward from within the community and provide a permanent walking group on the Bere Peninsula.



## 12.0 Communications, Education and Awareness

### 12.1 Background

Ensuring that the Tamar Valley reaches its economic and social potential, alongside conserving, protecting and enhancing the landscape, is a complex challenge for the AONB Partnership.

It is important to engage and educate as wide an audience as possible within the AONB, to build understanding and awareness of the forces for change, and to encourage debate regarding options and solutions.

There is huge scope to increase the public's enjoyment of this unique resource, particularly with the increased focus on outdoor learning and the role the outdoors plays in positive health and wellbeing.

Both the Helping Hands for Heritage and Heralds of Spring projects delivered training events which have helped to equip volunteers with the skills to engage with surveys and other citizen science projects either ongoing, or in the future. There is a clear appetite for learning about, and engaging with, heritage and biodiversity in the Valley.

There are a lot of exciting projects, ongoing and in the pipeline, to celebrate in the Tamar Valley AONB. The Tamara Landscape Partnership promises to make a real difference to the future of the AONB and beyond and there will be lots of news to share as this groundbreaking programme faces the challenges and offers potential solutions to the post-Brexit rural economy (if the second round funding bid is successful). The AONB is also a partner in a number of other projects including the Devon Greater Horseshoe Bat Project, Understanding Landscapes<sup>41</sup>, Connecting Actively to Nature programme and Building Resilience in South West Woodlands. We will also continue to build on the work started in Heralds of Spring, increasing our knowledge of historic daffodils in the Tamar Valley landscape.

Since the last Management Plan, Tamar Tender Loving Care (TLC) has been set up to raise, manage and distribute funds to enhance, conserve and protect the Tamar Valley. This registered charity\* will also be developing links across the Valley helping to spread the word about this beautiful place and work with local businesses across the AONB.

\*Tamar Tender Loving Care (TLC) – Registered Charity Number: 1166979

## 12.2 Facts and Figures

Average Website Monthly  
page views  
www.tamarvalley.org.uk

**1,830**

Most popular pages on  
website

- Explore
- Walking
- Discovery Trail

Number of visitors to Tamar  
Valley Centre in 2018

**4,720**

Number of subscribers to  
monthly e-bulletin

Pre-GDPR  
**1,625**

Post-GDPR  
**375**

Social Media Followers

**1,734**

Twitter @TVAONB

**1,213**

Facebook @TVAONB

Number of The Valley  
newsletters distributed  
2018



**14,000**

8,000 spring/summer

6,000 autumn/winter

The Valley is also available  
online

## 12.3 Forces for change

12.3.1 Tamar TLC and need for capacity to build links throughout the Tamar Valley AONB. Potential to work in conjunction with local businesses to be 'Ambassadors' for the area.

12.3.2 Development of the Tamar Valley Centre and Tamar Trails Centre as centres to promote and communicate the Valley as an educational resource. Opportunities to promote awareness and communicate messages about the Valley, both at the two centres and at other venues across the AONB.

12.3.3 Advances and speed of technological change and impact on managing expectation and embracing change.

12.3.4 The 25-year anniversary is an opportunity to optimise branding, key messages, education and audience development. Opportunity to create learning and awareness strategy to coincide with 25-year anniversary.

12.3.5 Working in partnership on a rolling portfolio of projects with a range of organisations with a focus on the Tamar Valley.

12.3.6 Development of the Tamara Landscape Partnership will provide an excellent opportunity to reach a range of audiences old and new.



## 12.4 Objective

- 12.4.1 Promote a greater understanding, appreciation and enjoyment of the AONB landscape and wider recognition of the designation and purpose.

## 12.5 Policies

- 12.5.1 Actively promote the importance and value of the natural and cultural landscape of the AONB.
- 12.5.2 Maximise the opportunity, through events, to promote the purposes of the AONB.
- 12.5.3 Engage the public in the enjoyment of the landscape and the opportunities it affords for recreation and learning, and to engender a sense of ownership.
- 12.5.4 Support the development of learning opportunities to promote awareness of the AONB's landscape, environment and communities.

## 12.6 Priorities for action

- 12.6.1 Communicate key messages and information via a range of media to local and national audiences.
- 12.6.2 Provide and maintain high quality interpretation of the AONB.
- 12.6.3 Provide high quality volunteering opportunities through Valley Volunteers in partnership with Tamar Community Trust, Friends of Tamar Valley, Tamar TLC and other groups.
- 12.6.4 Investigate how the Tamar Valley AONB and local businesses can work together for mutual benefit and to promote the unique qualities of the Tamar Valley landscape.

# Communications, Education and Awareness

## Case Study

### Heralds of Spring



During the spring, Tamar Valley hedgebanks and woodlands explode into a riot of colour, as daffodils bloom, making a striking impact on the landscape. These are very special daffodils, representing the strong heritage and cultural legacy of the market gardening industry, one of the key factors determining the Tamar Valley's sense of place and the heritage of communities within this nationally protected landscape.

The Tamar Valley AONB secured almost £9,900 from the Heritage Lottery Fund through the Sharing Heritage programme. Heralds of Spring was a ground breaking Heritage Lottery funded 'collection in the landscape' project. In addition to recording the important populations of historic daffodil varieties in the AONB, the project played a crucial role in increasing awareness of the unique horticultural collection at the heart of the spring in the Tamar Valley. The project was delivered by Tamar Grow Local on behalf of the Tamar Valley AONB.

A comprehensive events programme put the daffodils in full view. Many people were aware of the daffodils, but now became aware of the varieties when they took a closer look. 104 varieties were identified in the first season, and this didn't include many of the early flowerers. Oral histories and a film of the Bere Ferrers Spring Show have also captured a wealth of knowledge about the daffodils and provided a record of this popular annual community event. A packed house enjoyed the very successful Daffodil Conference at the Tamar Valley Centre in October 2017.

Other resources include an online Historic Daffodil ID quick guide and an online database record of locations of the records captured throughout the course of the project. Downloadable daffodil walks are also available starting at railway stations on the Tamar Valley Line so that the daffodils can be shared by new and existing audiences.

Additional surveys have taken place to identify more varieties and it is hoped to spread the focus to areas not yet recorded to give a complete record across the AONB.





Theme 3

# Partnership





## 13.0 The AONB Partnership

### 13.1 Background

The Tamar Valley AONB Partnership includes all the constituent Local Authorities, plus a range of organisations drawn from many sectors reflecting communities of both interest and geography, and the landscape and heritage aspects of the protected area.

The current members of the Partnership at the time of publication are:

Cornwall Council, Cornwall and West Devon Mining Landscape World Heritage Site, Cornwall Wildlife Trust, Country Land & Business Association, Defra, Devon & Cornwall Rail Partnership, Devon County Council, Devon Wildlife Trust, Drawn to the Valley, Environment Agency, Forestry Commission (SW), Friends of the Tamar Valley, Historic England, National Farmers Union (SW), National Trust, Natural England, Plymouth City Council, University of Plymouth, Queen's Harbour Master, South Hams District Council, Tamar Community Trust, Tamar Estuaries Consultative Forum, Tamar Valley Tourism Association, Tavistock Woodlands Estate, Westcountry Rivers Trust, West Devon Borough Council and Woodland Riders.

### 13.2 AONB Partnership Management Structure

The Tamar Valley AONB Partnership has an overall governance structure that enables all of its stakeholders to influence and contribute to the development of policy within the Management Plan, and to contribute to action on the ground through the Delivery Plan. An Executive Committee focuses on the detailed financial, staffing matters and meeting Defra obligations. The day to day embodiment of the Plan is fulfilled through the Tamar Valley AONB team.

#### The AONB Team

The Team comprises a core staff team and additional project staff that are funded from other sources, following the development of external funding bids. The AONB Team is responsible for advising the Partnership, for administering the secretariat for the Partnership, and for ensuring the delivery of the Management Plan.

#### The Executive

The Executive is made up of the constituent Local Authorities for the AONB, one of which is the 'Host' authority. This is currently Cornwall Council, which provides financial administration on behalf of the Partnership, line management and employment responsibility for the core staff and other project staff as appropriate. In addition, there is a representative from Natural England as landscape advisor to Defra and also up to three non-Local Authority members elected from the Partnership. This group has overall and executive financial responsibility for the AONB Partnership and the Team.

#### The Partnership

The Tamar Valley AONB Partnership is responsible for guiding, advising and supporting the AONB Team and Executive Group through the production and delivery of the AONB Management Plan.



### 13.3 Purpose of the Partnership

During the period of this Plan, 2019-2024, it is likely to be a time of considerable change, mainly due to Brexit, the impact of a new and potentially radical environmental land management scheme and revisions to the National Planning Policy Framework. Reporting in 2019 will also be the recommendations from the Glover Review, a cross-government review of designated landscapes. The review's purpose is to ask what might be done better, what changes could assist them, and whether definitions and systems are still sufficient for the present day and whether the AONB boundary needs reviewing. The findings may have subsequent impact locally for the Tamar Valley AONB and its Partnership, future governance and area of designation.

In order to respond to this changing environment, the membership and administration of the AONB Partnership will need to be periodically reviewed, including the addition of new partners from business, heritage and countryside sectors. This will involve scrutiny of the AONB Terms of Reference at regular intervals to ensure that the Partnership remains relevant and fit for purpose.

The funding arrangements for the AONB have been agreed to March 2020, with 75% of core costs coming via Defra and the remaining 25% is divided between Cornwall Council, Devon County Council, West Devon Borough Council and South Hams District Council. Pressures on the public purse and greater expectation for delivery indicate that without confirmed and additional sources of funding for the rest of this Plan's life, the ability for the AONB Team and Partnership to meet the core purpose to enhance and conserve the natural beauty of this area will be severely curtailed.

Defra funding, provided as a 'single pot' for the AONB, is currently divided into three areas: core, project and the Sustainable Development Fund (SDF). Core funding is the finance required to maintain and service the AONB Partnership and Team. Project funding, matched to other sources of funding, enables the delivery of the Management Plan through coordinated projects and initiatives. The most significant project during this Management Plan will be the National Lottery Heritage Fund and partner-funded Tamara Landscape Partnership, which started in January 2019.

The SDF, although modest, helps to fund community initiatives that promote the conservation, enhancement and awareness of the AONB. The ability to generate funds for projects from a range of funding bodies that support the delivery of the Management Plan aspirations is a core area of work for the AONB Team.

The Management Plan is enacted through the Delivery Plan, that is reviewed and refined on an annual basis and is the key supporting document in the Partnership grant application to Defra and the local authorities.

Progress on the delivery of the Management Plan is monitored and published in an Annual Review each year. A full review of the next Plan will commence in 2022/23 in order to produce a revised Plan for 2024-2029.

## Associated bodies

The Tamar Community Trust and Tamar Tender Loving Care (TLC) CIO support volunteers, maintain assets from previous project investment and generate income for the Tamar Valley AONB from alternative sources. These two bodies are very important in the delivery and support of the AONB's purposes and their roles will become more vital than ever in the lifespan of this Plan.

### Tamar Community Trust

The Tamar Community Trust was established to work alongside the Tamar Valley AONB Partnership in 2009 to help provide a complementary role, respecting the integrity and core purposes of the AONB. Much of their focus is to help maintain sites and assets for the benefit of the public, such as the Tamar Trails, Wacker Quay and the Tamar Valley Discovery Trail. The Trust's current business plan sets out the following as overarching priorities:

1. Encouraging and supporting volunteering, so enabling local people to take an active part in managing the Tamar Valley AONB landscape.
2. Raising awareness, championing and helping to deliver the AONB Management Plan priorities and being supportive of the AONB Team.
3. Sharing resources with the Friends of the Tamar Valley and the AONB Team to make best use of the skills available and to deliver the best results for the AONB and wider community.
4. Ensuring that the Trust's projects are consistent/not in conflict with the AONB Management Plan.

The Friends of the Tamar Valley are now also affiliated with the Tamar Community Trust and a modest membership entitles members to attend talks and events, and to receive a twice-yearly newsletter and a copy of the Tamar Journal.

The AONB Partnership, together with the Tamar Community Trust, Friends of the Tamar Valley and Tamar TLC have established a shared volunteering resource called the Valley Volunteers, to support the delivery of AONB objectives.

### Tamar TLC Charitable Incorporated Organisation

Tamar TLC was registered with the Charity Commission in May 2016 in order to raise, manage and distribute funds to enhance, conserve and protect the Tamar Valley AONB.

Their founding Trustees have devised a simple strategy to achieve their aims, which currently are:

1. Make collection boxes widely available in trusted outlets, managed by volunteers.
2. Seek sponsorship from businesses, clubs and societies, in the form of donations from fundraising activities and voluntary levies on sales.
3. Develop a small number of annual flagship events to raise money directly.
4. Invite legacy gifting.
5. Campaign online, promoting Tamar TLC projects to seek donations of money and of volunteer time.

The income generated will be reinvested in local projects and priorities to help keep the Tamar Valley special.

## 13.4 Objective

- 13.4.1 Maintain an effective, responsive, relevant and respected AONB Partnership that will sustain and promote the core purposes of the AONB.

## 13.5 Policies

- 13.5.1 Members of the AONB Partnership individually and collectively to support the implementation of the Management Plan and to enhance and maintain the special qualities of the Tamar Valley.
- 13.5.2 The Tamar Community Trust works alongside the AONB Partnership in a mutually supportive way to further the purposes of the designation, and to complement and sustain the Tamar Valley AONB.
- 13.5.3 Tamar TLC CIO works alongside the AONB Partnership in a mutually supportive way to further the purposes of the designation, and to complement and sustain the Tamar Valley AONB.

## 13.6 Priorities for action

- 13.6.1 Review the Partnership governance and future funding opportunities in order to support and maintain an effective core AONB Team and Partnership.
- 13.6.2 Review and negotiate a future Memorandum of Agreement between the constituent Local Authorities in order to ensure delivery of the five-year Plan.
- 13.6.3 Ensure that the AONB continues to have a host body that will enable delivery of the Management Plan.
- 13.6.4 Monitor and report back on the Defra agreed Key Performance Indicators to measure the impact of the work of the AONB Partnership and to contribute to national figures.
- 13.6.5 Provide focused input and support to the continued development of the Tamar Community Trust and Tamar TLC.

# Working in Partnership

## Case Study

### Tamara Landscape Partnership



Securing a positive future for the rivers at the heart of our special landscape, connecting heritage, communities and people

The Tamar Valley AONB team received initial National Lottery support for the Tamara Landscape Partnership project in September 2018.

Development funding of £180,000 was awarded by the National Lottery Heritage Fund through the Heritage Grants programme. This will help the Tamar Valley AONB and its partners to progress their plans to apply for a full National Lottery grant of £2.3 million at a later date to deliver the project.

The project aims to provide a brighter future for the Tamar Valley and its communities by making the landscape more robust and less susceptible to a range of pressures, through a programme of 11 individual, substantial projects.

Tamara Landscape Partnership will work with farmers and landowners to manage landscapes that are rich in wildlife, as well as cultural and historic heritage, help provide access to those landscapes and promote ways for people to enjoy the landscape whilst improving their health and wellbeing.

Over an 18-month period, new staff will be appointed to produce a Landscape Conservation Action Plan, detailing the proposed works for the five-year delivery phase and building links with local farmers, landowners and other stakeholders both within and adjacent to the Tamar Valley AONB.

It has taken a huge amount of work to get the project to this stage, working together with partners across a range of sectors to shape the vision for the Landscape Partnership. It's the start of an exciting journey.

We look forward to working with our many partners in developing this amazing opportunity further. By working in partnership we can achieve so much more by sharing resources and expertise for the benefit of the Tamar Valley, its communities and securing a robust future for this cherished landscape.





## Supporting documents – available online

### Annex 1a and 1b: Landscape Character Areas, Special Qualities and Special Features

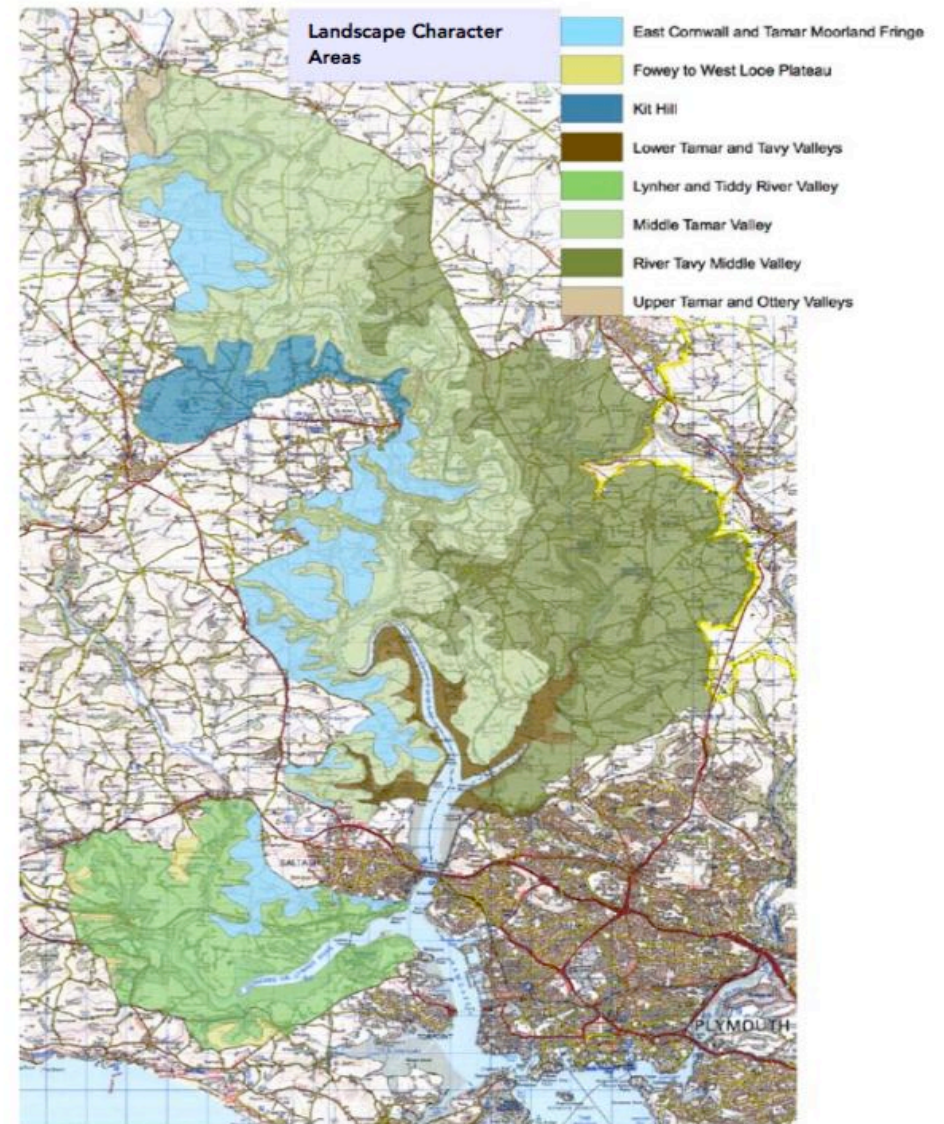
The Landscape Character Area Annexes, which comprise two documents (Annex 1a and 1b), are available on the Tamar Valley AONB website, [www.tamarvalley.org.uk](http://www.tamarvalley.org.uk). They include information from the Landscape Character Areas (LCA) descriptions, compiled by local authorities as an evidence base for Local Plans. Annex 1a 'Landscape Character Areas and Special Qualities', lists how the AONB's special qualities link to its LCAs. Annex 1b 'Landscape Character Areas and Special Features', goes a step further and lists some specific features that illustrate the characteristics of the LCAs.

The lists are illustrative and by no means comprehensive, the named sites are not placed in any hierarchy and not all designations are included. It will be regularly updated, hence the electronic publication. Nevertheless, it is a full, integral part of this Plan.

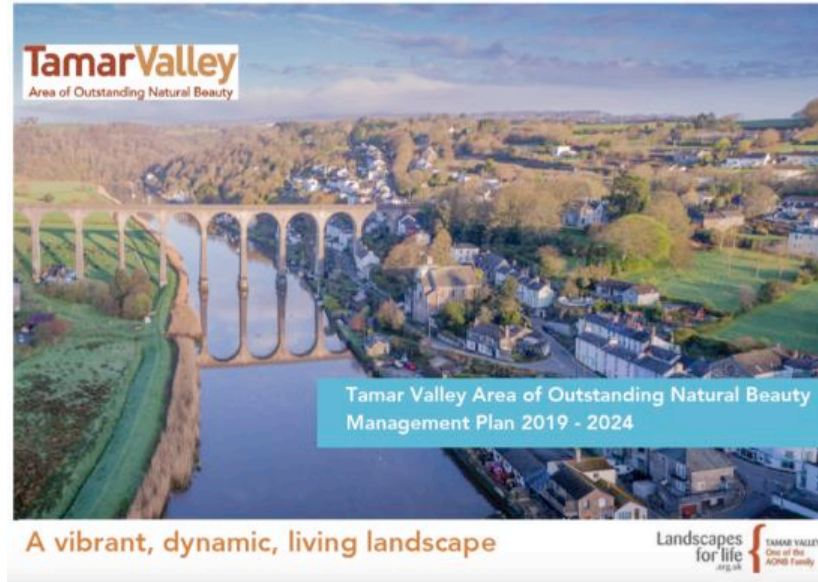
### Landscape Character Areas and Historic Landscape Characterisation

Landscape Character Assessments are county wide and identify Landscape Character Areas, amalgamated from smaller Landscape Description Units. These county studies, delivered by landscape experts for Devon and Cornwall Councils, involved extensive local consultation and used a nationally approved methodology<sup>45</sup>. The basis of the exercise was a desk study that identified fine-grained Landscape Description Units with strongly distinctive topography. These were then assessed in the field and amalgamated into Landscape Character Areas with a strong identity that could be described according to set criteria and summarised with a set of key characteristics. The Landscape Character Areas identified for the Tamar Valley AONB are described in Annex 1a and 1b.

**Historic Landscape Characterisation** assessment of the predominant historic character of an area, has also been completed for the AONB. Together, the Landscape Character Assessment and Historic Landscape Characterisation provide a core resource for understanding, describing and monitoring the landscape of the AONB.



© Crown copyright and database rights 2011 Ordnance Survey 100051681



## ANNEX 1c - Tamar Valley AONB Planning Guidance

### Annex 1c: Planning

This annex provides more detailed procedures and guidance around planning processes and considerations to ensure that any proposals support the Tamar Valley AONB's purposes and objectives. It provides up to date guidance and has been reviewed in the light of changes to the NPPF (2018). The document is available on the Tamar Valley AONB website, [www.tamarvalley.org.uk](http://www.tamarvalley.org.uk). It will be regularly reviewed, hence the electronic publication but this document is a full and integral part of this plan.

## References

- 1 Department for Environment, Food and Rural Affairs: 25 Year Environment Plan - <https://www.gov.uk/government/publications/25-year-environment-plan>
- 2 Department for Environment, Food and Rural Affairs: Landscapes review of National Parks and AONBs - <https://www.gov.uk/government/publications/designated-landscapes-national-parks-and-aonbs-2018-review>
- 3 Countryside and Rights of Way Act 2000 - <https://www.legislation.gov.uk/ukpga/2000/37/contents>
- 4 Guidance for AONB Partnership Members - <http://www.landscapesforlife.org.uk/wp-content/uploads/2015/03/Guidance-for-AONB-Partnership-Members.pdf>
- 5 National Association for AONBs: Landscapes for life - <http://www.landscapesforlife.org.uk>
- 6 Rouse, E. Tamar Valley AONB Service Area: Historic Character Areas (2002)
- 7 Rippon, S., Smart, C., Wainwright, A. Farms, Fields and Mines: an historic analysis of Calstock Parish (2012)
- 8 Plymouth and South West Devon Joint Local Plan - <https://www.plymouth.gov.uk/planningandbuildingcontrol/plymouthandsouthwestdevonjointlocalplan>
- 9 Davy, F., Martin, J. Plymouth University – Tamar Valley AONB Monitoring Report (2018)
- 10 Department for Environment, Food and Rural Affairs: Plant Biosecurity Strategy (2014) - <https://www.gov.uk/government/publications/plant-biosecurity-strategy-for-great-britain>
- 11 Institution of Lighting Professionals - <https://www.theilp.org.uk/home/>
- 12 Cornwall and West Devon Mining Landscape World Heritage Site - <https://www.cornish-mining.org.uk/world-heritage-site-status>
- 13 Historic Environment Strategy for Cornwall – Cornwall Council, awaiting finalisation.
- 14 Butterfly Conservation: Saving the Heath Fritillary in the Tamar Valley - <https://butterfly-conservation.org/our-work/conservation-projects/england/saving-the-heath-fritillary-in-the-tamar-valley>
- 15 Devon Greater Horseshoe Bat Project - <http://devonbatproject.org>
- 16 Building Resilience in South West Woodlands - <http://www.plantlife.org.uk/uk/our-work/conservation-projects/woodland/building-resilience-in-south-west-woodlands>
- 17 Department for Environment, Food and Rural Affairs: Tree health resilience strategy (2018) - [https://www.gov.uk/government/publications/tree-health-resilience-strategy-2018?utm\\_source=0cf25ab9-483e-4012-b40d-ed3f4791ebd&utm\\_medium=email&utm\\_campaign=govuk-notifications&utm\\_content=immediate](https://www.gov.uk/government/publications/tree-health-resilience-strategy-2018?utm_source=0cf25ab9-483e-4012-b40d-ed3f4791ebd&utm_medium=email&utm_campaign=govuk-notifications&utm_content=immediate)
- 18 Cornwall Council: Cornwall's Environmental Growth Strategy - <https://www.cornwall.gov.uk/environmentalgrowth>
- 19 Department for Environment, Food and Rural Affairs: Biodiversity 2020, A Strategy for England's wildlife and ecosystem services - <https://www.gov.uk/government/publications/biodiversity-2020-a-strategy-for-england-s-wildlife-and-ecosystem-services>
- 20 Tamar Estuaries Marine Biosecurity Plan (2018 – 2020) - <http://www.plymouth-mpa.uk/wp-content/uploads/2018/06/180613-Tamar-Estuaries-Marine-Biosecurity-Plan.pdf>
- 21 Plymouth Sound National Marine Park - <https://www.plymouth.gov.uk/marinepark>
- 22 Environment Agency: Tamar Index River Monitoring Report (2017)
- 23 Environment Agency: Tamar Index River Monitoring Report (2017)
- 24 Marine Biological Association: Survey of recreational use within the Plymouth Sound and Estuaries European Marine Site (2017) - <http://www.plymouth-mpa.uk/wp-content/uploads/2018/06/171207-Rec-Study-04-FINAL-JLP-evidence.pdf>

- 25 Intergovernmental Panel on Climate Change - <https://www.ipcc.ch>
- 26 Water Framework Directive Regulations (2017) - <https://www.legislation.gov.uk/uksi/2017/407/contents/made>
- 27 Marine Strategy Framework Directive - <http://jncc.defra.gov.uk/page-5193>
- 28 Upstream Thinking - <http://www.upstreamthinking.org>
- 29 Devon Local Nature Partnership: State of the Environment summary (2017) - <https://www.naturaldevon.org.uk/state-of-environment/>
- 30 Cornwall Council: Clean Air for Cornwall Strategy - <https://www.cornwall.gov.uk/environment-and-planning/environmental-protection/environmental-protection-air-quality/clean-air-for-cornwall-strategy/>
- 31 Tamar Catchment Partnership - <http://my-tamar.org>
- 32 Tamar Invasives Project - <http://www.tamarvalley.org.uk/projects/tamar-invasive-project/>
- 33 South West Research Company: Value of Tourism in Tamar Valley AONB (2016)
- 34 Devon and Cornwall Rail Partnership: Valuing the Tamar Valley Line (2018) - <https://www.dcrp.org.uk/wp/wp-content/uploads/2018/07/valuing-the-tamar-valley-line-executive-summary.pdf>
- 35 Plymouth Sound and Tamar Estuaries Marine Protected Area - <http://www.plymouth-mpa.uk>
- 36 Marine Biological Association: Survey of recreational use within the Plymouth Sound and Estuaries European Marine Site (2017) - <http://www.plymouth-mpa.uk/wp-content/uploads/2018/06/171207-Rec-Study-04-FINAL-JLP-evidence.pdf>
- 37 Plymouth City Council: A vision for Plymouth - <https://www.plymouth.gov.uk/planningandbuildingcontrol/designandhistoricenvironment/visionplymouth>
- 38 Ministry of Housing, Communities and Local Government: Revised National Planning Policy Framework (2018) - <https://www.gov.uk/government/collections/revised-national-planning-policy-framework>
- 39 Campaign to Protect Rural England: Dark Skies/Tranquillity - <https://www.cpre.org.uk/resources/countryside/dark-skies/> / <https://www.cpre.org.uk/what-we-do/countryside/tranquil-places?highlight=WyJ0cmFucXVpbGxpdkHkiLCIndHJhbnF1aWxsaXR5Jy4iLCJ0cmFucXVpbGxpdkHknII0=>
- 40 Landscape Institute: Landscape Visual Impact Assessment - <https://www.landscapeinstitute.org/technical-resource/landscape-visual-impact-assessment/>
- 41 Connecting Actively to Nature Programme - <https://activedevon.org/campaigns/can/>
- 42 Cornwall Council: Grow Nature Seed Fund - <https://www.cornwall.gov.uk/environment-and-planning/grow-nature/funding/>
- 43 South Hams District Council and West Devon Borough Council: SeaMoor Lotto - <https://www.seamoorlotto.co.uk>
- 44 University of Exeter: Understanding Landscapes - <https://humanities.exeter.ac.uk/archaeology/research/projects/understandinglandscapes/theproject/aboutus/>
- 45 Natural England/Department for Environment, Food and Rural Affairs: Landscape and seascape character assessments - <https://www.gov.uk/guidance/landscape-and-seascape-character-assessments>



## Glossary

**Active Devon** – community focused, not for profit organisation inspiring and supporting the people of Devon to lead active lifestyles.

**Affordable housing** – housing provided for rent or sale at a price level which can be sustained by local people in housing need.

**Ancient woodland** – defined as land that has been continually wooded since at least 1600AD. From 1600, planting of woodland became more common, so woodland that pre-dates this is more likely to have grown up naturally. Some ancient woods may even link back to the original wildwood that covered the UK around 10,000 years ago. Also Ancient Semi-Natural Woodland (ASNW).

**Area of Outstanding Natural Beauty (AONB)** – designated landscape whose distinctive character and natural beauty are so outstanding it is in the nation's interest to safeguard them by law.

**Biodiversity** – the common term for 'biological diversity', the range of plant and animal species present in an area.

**Biodiversity 2020** – Government strategy for England's wildlife and ecosystem services. Aims to halt overall biodiversity loss, support healthy well-functioning ecosystems and establish coherent ecological networks, with more and better places for nature for the benefit of wildlife and people.

**Biodiversity Action Plan (BAP)** – Action Plans concerned with protecting biodiversity, from international to national and local levels.

**Biomass** – living matter, for example plant material, vegetation or agricultural waste, used as a fuel or energy source.

**Brexit** – the withdrawal of the United Kingdom from the European Union (EU).

**Building Resilience in South West Woodlands** – National Lottery Heritage Fund supported project hosted by Plantlife working in the Atlantic woodlands of Devon, Somerset and Cornwall.

**Catchment Sensitive Farming (CSF)** – a programme that aims to develop measures to tackle diffuse water pollution from agriculture.

**Category V Protected Landscapes** – refers to category of lived-in landscapes in the United Nations list of protected areas. These areas are characterised by their scenic beauty.

**Clean Air Strategy 2018** – draft Defra strategy outlining government ambitions relating to reducing air pollution in the round, making our air healthier to breathe, protecting nature and boosting the economy.

**Common Agricultural Policy (CAP)** – European-wide policy that supports agriculture through price support, market management and measures to improve the agricultural industry.

**Community Infrastructure Levy** – a levy that local authorities in England and Wales can choose to charge on new developments in their area (Aug 2013).

**Community Interest Company (CIC)** – a special type of limited company, which exists to benefit the community rather than private shareholders.

**Charitable Incorporated Organisation (CIO)** – a form of charity which is not a limited company or subject to company regulation.

**CoaST – Cornwall Sustainable Tourism Project**

**Cornwall's Environmental Growth Strategy** – produced by Cornwall and Isles of Scilly Local Nature Partnership and Cornwall Council, aims to encourage businesses, communities and individuals to work together to increase environmental, social and economic prosperity in Cornwall. Accompanied by Biodiversity targets for Cornwall.

**Connecting Actively to Nature (CAN) Programme** – Devon Local Nature Partnership’s five-year programme aiming to support people over 55 to connect actively to nature and enjoy a more healthy lifestyle. Funded by Sport England.

**Campaign to Protect Rural England (CPRE)** – registered charity campaigning for the beauty, tranquillity and diversity of the English countryside.

**Conservation Area** – an area of special architectural or historic interest, with a character or appearance considered desirable to preserve or enhance.

**Conservation of Habitats & Species Regulations 2010** – provides protection to European animals and plants.

**Cordiale** – a cross border (South West England and North West France) Interreg IVa protected landscapes project working on sustainable landscape management that ran 2010-13. Its vision was to ‘adopt a common standard for informing and assisting the management of protected landscapes in furtherance of the European Landscape Convention and in the context of climate change’. Tamar Valley AONB was a lead partner in the project.

**Countryside and Rights of Way Act 2000 (CRoW)** – confirms the significance of AONBs. Section 85 places a statutory duty on all relevant authorities to have regard to the purpose of conserving and enhancing natural beauty when discharging any function in relation to, or affecting, land within an AONB.

**County Geological Site (CGS)** – non-statutory designation used to identify some of the most significant areas for geology and Earth heritage. They underpin and expand the network of Sites of Special Scientific Interest and are of county or regional importance in their own right (previously referred to as Regionally Important Geological Sites).

**Department for Environment, Food and Rural Affairs (Defra)** – the Government department responsible for dealing with environmental issues, agriculture, food and rural affairs.

**Designed Landscape** – an area of land, which has been modified by people for primarily aesthetic effect. The term is used by historians to denote sites such as gardens, parks, cemeteries and wider estates.

**Devon Greater Horseshoe Bat Project** – five year National Lottery Heritage Fund supported project led by Devon Wildlife Trust. The Tamar Valley AONB is one of the project partners.

**Devon Special Species lists** – long list of species known to be rare in Devon and short list of species for which Devon has a particular responsibility.

**Drawn to the Valley** – formed in 2003 by the artists themselves, mainly as a support network but also in order to promote the Tamar Valley area and to contribute to the regeneration of the local economy through selling exhibitions and Open Studios.

**Ecosystem Services** – the range of public goods and services derived from the natural environment.

**English Woodland Grant Scheme** – grants for woodland management, improvement, creation, planning and assessment administered through the Forestry Commission.

**Entry Level Scheme (ELS)** – Entry Level of Environmental Stewardship (ES), an agri-environment scheme launched in 2005 where land managers receive payment for simple, effective environmental management.

**Environment Agency** – the principal environmental regulator in England and Wales, relating to pollution, waste and the water environment.

**Environmental Land Management Scheme (ELMS)** – due to replace the current Basic Payment Scheme, aims to incentivise farmers and landowners to achieve environmental enhancement and protection and restore and improve natural capital and rural heritage.

**European Landscape Convention** – also known as the Florence Convention, after the city where the convention was adopted - promotes the protection, management and planning of European landscapes and organises European cooperation on landscape issues. It is the first international treaty to be exclusively concerned with all dimensions of European landscape.

**European Marine Sites (EMS)** – collectively describes Special Areas of Conservation (SACs) and Special Protection Areas (SPAs) that are covered by tidal waters and protect some of our most important marine and coastal habitats and species of European importance.

**Farming and Wildlife Advisory Group (FWAG) South West** – seeks to support, enthuse & inspire fellow farmers to value the environmental assets on their land & use them to secure sustainable & profitable businesses for the future.

**Forestry Commission** – the government department responsible for the protection and expansion of England and Scotland forests and woodlands.

**Friends of the Tamar Valley** – small group of people with a passion for the Tamar Valley. Monthly meetings with informative talks are open for all to enjoy.

**Geodiversity** – may be defined as the natural range (diversity) of geological features (rocks, minerals, fossils, structures), geomorphological features (landforms and processes) and soil features that make up the landscape.

**Geological Conservation Review** – founded in 1977 to identify those sites of national and international importance needed to show all the key scientific elements of the Earth heritage of Britain.

**Green Infrastructure** – is a strategically planned and delivered network of high quality green spaces and other environmental features. It should be designed and managed as a multifunctional resource capable of delivering a wide range of environmental and quality of life benefits for local communities. (**Blue Infrastructure** - if aquatic ecosystems are involved).

**Grow Nature Seed Fund** – supports local projects that contribute to the delivery of Environmental Growth as set out in Cornwall's Environmental Growth Strategy.

**Habitat** – the place where a particular animal or plant lives, or the wider interaction of plants and animals that are found together.

**Helping Hands for Heritage** – two-year (2014-2016) Heritage Lottery funded project run by Tamar Valley AONB to build on volunteer capacity in the area.

**Heralds of Spring** – one-year Heritage Lottery funded project delivered by Tamar Grow Local on behalf of Tamar Valley AONB celebrating and recording historic daffodil varieties across the Tamar Valley AONB, focusing on the Bere Peninsula. Extended to second year using core AONB funding. (2017-2018)

**Heritage at Risk** – a dynamic picture of the health of England's heritage published annually by Historic England as a list of those sites most at risk of being lost through neglect, decay or inappropriate development.

**High Nature Value Farming** – this concept developed from a growing recognition that the conservation of biodiversity in Europe depends on the continuation of low-intensity farming systems.

**Higher Level Scheme (HLS)** – Higher Level of Environmental Stewardship (ES), an agri-environment scheme launched in 2005 where land managers receive payment for more complex management of specific types of landscape and features considered particularly valuable.

**Historic England** – the Government's statutory adviser on the historic environment (formerly English Heritage).

**Historic Environment Record** – a system for recording information about the historic environment, such as archaeological sites and finds, designated sites, historic landscapes, historic buildings and other features in the landscape. These records were previously known as Sites and Monuments Records (SMR).

**Historic Environment Strategy for Cornwall** – Currently being finalised by Cornwall Council’s Historic Environment Service and incorporates work around local distinctiveness in Cornwall.

**Historic Landscape Analysis** – in-depth analysis, usually at a parish scale, of the historic landscape as it appears today underneath the buildings and infrastructure of today. It draws on Historic Landscape Characterisation (HLC) and other historic area studies, but will involve fieldwork and further, usually archival, research.

**Historic Landscape Characterisation (HLC)** – analysis of the countryside looking at the land uses and historical influences which have created modern components of the landscape.

**Indicators** – ways of quantifying and measuring the impact of policy objectives. In this Plan, primary indicators refer to readily available data held by organisations and secondary indicators, which will require new research or additional analysis.

**Intergovernmental Panel on Climate Change (IPCC)** – assesses the scientific, technical and socioeconomic information relevant for the understanding of the risk of human-induced climate change.

**International Union for Conservation of Nature (IUCN) – the World Conservation Union. IUCN Category V protected landscape** – Landscape/Seascape protected area managed mainly for landscape/seascape conservation and recreation. Area of land, with coast and sea as appropriate, where the interaction of people and nature over time has produced an area of distinct character with significant aesthetic, ecological and/or cultural value, and often with high biological diversity. Safeguarding the integrity of this traditional interaction is vital to the protection, maintenance and evolution of such an area.

**Landscape Character Area (LCA)** – areas which share similar landscape characteristics. These areas represent the next scale down from the large national areas and give an overview of how landscapes change across the country. LCAs are constructed by amalgamating Landscape Description Units (LDUs) with shared characteristics.

**Landscape Character Assessment** – a tool to understand and articulate the character of the landscape; identify the features that give a locality its ‘sense of place’; and pinpoints what makes it different from neighbouring areas. The assessments are county wide and identify Landscape Character Areas, which are amalgamated from smaller Landscape Description Units.

**Landscape Description Unit (LDU)** – the building blocks of landscape character studies and the base unit for the construction of the Landscape Character Areas (LCAs). The areas have been mapped using nationally available information on physiographic, ground type, land cover and cultural pattern. Local data on biodiversity and the historic landscape will be added to the LDU descriptions to give further local detailing. LDUs are the smallest unit in landscape characterisation studies, although their sizes vary depending on the uniformity of the landscape in a given place.

**Landscape Enhancement Initiative (LEI)** – a grant scheme that forms an important part of National Grid’s Visual Impact Provision project. The overall objective of the scheme is to reduce the landscape and visual impact of National Grid’s existing electricity infrastructure and enhance the quality of the affected designated landscapes.

**Landscape Monitoring Units (LMU)** – suitably sized areas of common landscape character identified to enable change to be monitored over time. The identification of LMUs is based on the information contained within Landscape Character Assessment.

**Landscape Visual Impact Assessment** – a tool used to help design the proposed change as well as assess its effects, so that negative landscape effects are avoided, reduced or offset.

**Listed Buildings** – buildings of special architectural or historic interest listed by the Secretary of State for the Department of Digital, Culture, Media and Sport under the Planning (Listed Buildings and Conservation Areas) Act 1990.

**Local Access Forums** – advise decision making organisations (such as local authorities) about making improvements to public access for outdoor recreation and sustainable travel.



**Local Development Framework (LDF)** – a written statement and proposals map formulating the district planning authority’s detailed policies for the development and use of land in its area.

**Local Enterprise Partnership** – in 2011 the Government invited local councils and businesses to set up voluntary partnerships to help strengthen local economies and set out local economic priorities. They replaced Regional Development Agencies.

**Local Nature Partnership** – partnerships of a broad range of local organisations, businesses and people who aim to help bring about improvements in their local natural environment. Setting up LNPs was one of the commitments Defra made in the Natural Environment White Paper 2011.

**Local Nature Reserve** – a statutory designation offering people special opportunities to study or learn about nature or simply to enjoy it.

**Local Planning Authority (LPA)** – the local authority or council that is empowered by law to exercise statutory town planning functions for a particular area of the United Kingdom.

**Marine Conservation Zone (MCZ)** – a type of marine protected area, existing alongside European marine sites, SSSIs and Ramsar sites to form an ecologically coherent network of marine protected areas.

**Marine Strategy Framework Directive (MSFD)** – outlines a transparent, legislative framework for an ecosystem-based approach to the management of human activities, which supports the sustainable use of marine goods and services.

**Memorandum of Agreement (MOA)** – a document written between parties to cooperate on an agreed upon project or meet an agreed objective. The purpose of an MOA is to have a written understanding of the agreement between parties.

**National Association for Areas of Outstanding Natural Beauty (NAAONB)** – formed in 1998 as an independent organisation to act on behalf of AONBs in England and Wales.

**National Bat Monitoring Programme** – annual bat surveys undertaken by volunteers, run by the Bat Conservation Trust.

**National Character Areas** – 159 distinct natural areas defined by Natural England. Each is defined by a unique combination of landscape, biodiversity, geodiversity and cultural and economic activity. Their boundaries follow natural lines in the landscape rather than administrative boundaries, making them a good decision-making framework for the natural environment.

**National Ecosystem Assessment 2011** – the first analysis of the UK’s natural environment in terms of the benefits it provides to society and continuing economic prosperity. It involved many government, academic and non-governmental organisations and private sector institutions.

**National Forest Inventory** – accurate, up-to-date information about the size, distribution, composition and condition of our forests and woodlands, delivered by the Forestry Commission.

**National Lottery Heritage Fund** – the National Lottery distributor responsible for giving grants to projects, which conserve and enable people to learn about and be involved in their heritage, formerly Heritage Lottery Fund (HLF).

**National Parks and AONBs Review 2018 (Glover Review)** – Defra, nearly 70 years after National Parks and AONBs were first established, this review will ensure designated landscapes are fit for purpose.

**National Planning Policy Framework (NPPF)** – guidance for local planning authorities and decision-makers in drawing up plans and making decisions about planning applications. Reviewed in 2018.

**Natural England** – the Government’s adviser on the natural environment for England. Its remit is to ensure the natural environment is conserved, enhanced and managed for the benefit of present and future generations.

**Natural Environment White Paper (NEWP)** – Government’s vision for the natural environment, backed up with practical action. It represents an opportunity to change the way we think and manage the natural environment, seeing it as a system and valuing the services it gives us.

**Neighbourhood Plan** – provides a powerful set of tools for local people to ensure that they get the right types of development for their community where the ambition of the neighbourhood is aligned with the strategic needs and priorities of the wider local area.

**Plantations on Ancient Woodland Sites (PAWS)** – ancient woodland sites currently under coniferous plantation.

**Plymouth Marine Park** – proposal to create a new type of Marine Park for Plymouth, the Plymouth approaches and the estuaries complex including the Tamar, Tavy and Lynher. Initial funding has been secured to develop this proposal further.

**Registered Parks & Gardens** – the Historic England ‘Register of Historic Parks and Gardens of special historic interest in England’, established in 1983, currently identifies over 1,600 sites assessed to be of national importance.

**Rural Development Programme for England (RDPE)** – Government funding programme for projects to improve agriculture, the environment and rural life. Runs from 2014-2020.

**SeaMoor Lotto** – Created in 2018 by South Hams District Council and West Devon Borough Council, set up to support community projects in the local area.

**Scheduled Monument** – a protected archaeological site or historic building of national importance (formerly known as Scheduled Ancient Monument).

**Single Payment Scheme** – the principal agricultural subsidy scheme in the European Union. Subsidies are not linked to production and environmentally friendly farming practices are better acknowledged and rewarded.

**Sites of Special Scientific Interest (SSSI)** – areas designated by Natural England or its predecessors as being of special interest because of their flora, fauna, geomorphological or physiological features.

**South West Protected Landscapes Forum** – informal association that encouraged networking and exchange of information and ideas between the AONBs and National Parks in the south-west region and the South West Coast Path. This has now merged with the National Association for AONBs.

**South West Marine Plan** – the south west marine plan areas includes the south west inshore and south west offshore marine plan areas including the tidal estuaries.

**Special Area of Conservation (SAC)** – strictly protected sites designated under the EC Habitats Directive providing statutory protection for habitats and species of European importance.

**Special Protection Area (SPA)** – designated under the European Birds Directive because of their importance to birds. Statements of Environmental Opportunity (SEOs) – Aspirational opportunities for action identified in the National Character Area Priorities.

**Sustainability** – as defined by the World Commission on Environment and Development as ‘development that meets the needs of the present, without compromising the ability of future generations to meet their own needs’.

**Sustainable Development Fund (SDF)** – grant scheme provided by Defra, for AONBs and National Parks to support projects that bring environmental, social and economic benefits to the area.

**Tamar Community Trust (TCT)** – established in 2009 to work alongside the Tamar Valley AONB, to undertake work that helps protect, conserve and promote the natural landscape and heritage of the Tamar Valley.

**Tamar Estuaries Consultative Forum (TECF)** - the estuary management partnership that brings together stakeholders to promote the delivery of integrated management for the Tamar estuaries and nearby coastal areas in order to ensure long term sustainability.

**Tamar Grow Local** – a ‘not for profit’ Community Interest Company, set up on co-operative principles for the benefit of the community promoting sustainable local produce in the Tamar Valley.

**Tamar Catchment Pilot Project** – pilot project funded by Defra to investigate a partnership approach to catchment management and ecosystem services.

**Tamar Invasives Project** – created to control invasive plants in the River Tamar corridor. Partnership of Tamar Valley AONB, Environment Agency, Natural England and Cornwall Council and Cormac.

**Tamar TLC** – Charitable Incorporated Organisation (CIO) launched in 2017 to raise, manage and distribute funds for the benefit of the Tamar Valley AONB.

**Tamar Valley AONB Partnership** – partnership of local authorities, local and national organisations and local community interests with responsibility for managing the Tamar Valley AONB.

**Tamar Valley Tourism Association (TAVATA)** – formed in 2001 to encourage and promote quality tourism in the area. A not-for-profit organisation with a membership of businesses in the Tamar Valley with an interest in tourism.

**Tamara Landscape Partnership** – National Lottery Heritage Fund supported scheme currently in development stage.

**Tavistock Guildhall** – with the support of the National Lottery Heritage Fund the Town Council proposes to repair, restore and convert the Guildhall and Magistrates’ Court bringing them back into active use to, in part, create a ‘gateway’ centre for information about the Cornwall and West Devon Mining Landscape World Heritage Site.

**Tavistock Townscape Heritage Initiative** – a five year National Lottery Heritage Fund supported project. Its aim is to restore important historic buildings and public spaces in order to ensure that the rich historic built environment of the town is protected.

**Tranquillity** – the quality of calm experienced in places with mainly natural features and activities, free from disturbance from man-made ones (as defined by the Campaign to protect Rural England).

**Tree Health Resilience Strategy 2018** – Defra strategy explaining how the government will work with others to protect England’s tree population from pest and disease threats.

**United Nations Educational, Scientific and Cultural Organisation (UNESCO)** – “created in 1945 in order to respond to the firm belief of nations, forged by two world wars in less than a generation, that political and economic agreements are not enough to build a lasting peace”. One of their beliefs is to build “intercultural understanding: through protection of heritage and support for cultural diversity”. UNESCO created the idea of World Heritage to protect sites of outstanding universal value and inscribe World Heritage Status.

**Upstream Thinking Project** – South West Water’s multi-award-winning catchment management scheme which has been applying natural landscape-scale solutions to water quality issues since 2008.

**Understanding Landscapes** – National Lottery Heritage Fund supported project led by the University of Exeter investigating history and archaeology of two distinct areas of Devon and Cornwall with a common theme being their Roman and medieval communities. In the Tamar Valley this work will focus on Calstock, Cotehele and the Bere peninsula.

**Water Framework Directive (WFD)** – part of UK law, the WFD provides an opportunity to plan and deliver a better water environment, focusing on ecology, through a management planning cycle.

**Wildlife & Countryside Act 1981** – the principle mechanism for the legislative protection of wildlife in Great Britain.

**World Heritage Site (WHS)** – a place (such as a forest, mountain, lake, island, desert, monument, building, complex or city) that is listed by UNESCO as of special cultural or physical significance.



## Photography

Front Cover

Page 9, 16,

Back Cover

© TON Drone Services/Tobi O'Neill

Page 37

© Tamar Valley AONB

Page 59

© Les Deering


All other images credited in body of document

## Production

Tamar Valley AONB Team with the support of the Tamar Valley AONB Partnership

## Design

Lesley Strong, Tamar Valley AONB



Tamar Valley AONB  
Tamar Valley Centre  
Cemetery Road  
Drakewalls  
Gunnislake  
Cornwall  
PL18 9FE  
01822 835030

[enquiries@tamarvalley.org.uk](mailto:enquiries@tamarvalley.org.uk)  
[www.tamarvalley.org.uk](http://www.tamarvalley.org.uk)

